



E-ISSN: 2278-4136  
 P-ISSN: 2349-8234  
 JPP 2016; 5(6): 115-119  
 Received: 19-09-2016  
 Accepted: 20-10-2016

**AR Florence**  
 Department of Botany, Scott  
 Christian College (Autonomous),  
 Nagercoil, Tamil Nadu, India

**C Domettilla**  
 Department of Botany, St.  
 Jude's College, Thoothoor, Tamil  
 Nadu, India

## Anatomical studies on leaf and stem of *Gmelina asiatica* L.: An ethnomedicinal important plant

**AR Florence and C Domettilla**

### Abstract

The present investigation is to provide information on the anatomical features of the leaves and stems of the plant *Gmelina asiatica*. Leaf and stem anatomy of *G. asiatica* was undertaken by rotary microtome and examined on photomicrographs. Anatomical characters such as echinate epidermal cells, glandular trichomes, anomocytic stomata, calcium oxalate crystals, periderm cylinder, phellem cells and vascular bundle of leaf and stem explains typical features of Verbenaceae. This study provides valuable information for reference and correct identification of the family Verbenaceae.

**Keywords:** *Gmelina asiatica*, plant anatomy, photomicrograph, identification

### 1. Introduction

*Gmelina asiatica* L. (Syn: *Gmelina parvifolia* Roxb.), is a large sized deciduous shrub about 4m to 6 m tall and much branched. Leaves are small petiolated and ovate. Leaves and young shoots are used for jaundice, rheumatism, syphilis, gonorrhoea, burning sensation of eyes, fever, dysuria, wounds, dandruff, diabetes, hepatic diseases and also to reduce body heat [1-6]. Plant anatomy provides a novel perspective on the microscopic structure of plants. Pharmacognostic study is the initial step to confirm the identity and to assess the quality and purity of the crude drug. Quality control of crude drugs is a challenging task because of complex nature of chemical constituents. To ensure the quality of herbal products proper identification of the plant material is essential [7]. Anatomical characters help for identification, when the morphological features are indistinct [8]. Anatomical features of *G. asiatica* leaf and stem was undertaken with the aim to provide key diagnostic tools of identification.

### 2. Materials and Methods

#### 2.1 Collection and Identification

Leaves of *G. asiatica* were collected from Scott Christian College Campus, Nagercoil, Kanyakumari District, South Tamilnadu, India and identified using Gamble and Fisher [9].

#### 2.2 Sectioning

For anatomical studies, the fresh samples were fixed in FAA (Formalin-5 mL+ Acetic acid-5 mL + 70% Ethyl alcohol-90 mL). The paraffin-embedded specimens were sectioned by rotary microtome. The thickness of the sections was 10-12  $\mu$ m. Dewaxing of the sections was done by customary procedure [10] and stained with Toluidine blue as per the method published by O'Brien *et al* [11]. The dye rendered pink colour to the cellulose walls, blue to the lignified cells, dark green to suberin, violet to the mucilage, blue to the protein bodies etc. Sections were also stained with safranin and Fast-green and IKI (for Starch) wherever necessary.

#### 2.3 Photomicrographs

Microscopic descriptions and photographs of different magnifications were taken with Nikon labphoto 2 microscopic unit. For the study of crystals and lignified cells, polarized light was employed. Magnifications and anatomical features were reviewed [12].

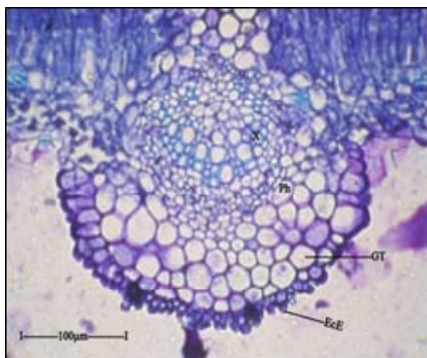
### 3. Results

#### 3.1 Anatomy of leaf

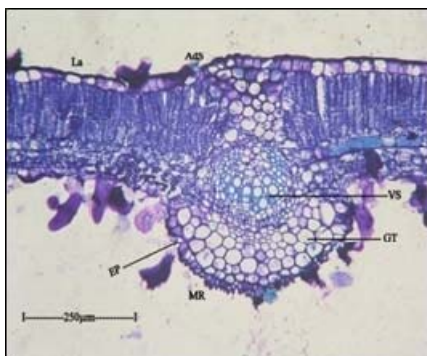
*Gmelina asiatica* leaf consists of thick flat convex midrib and thick lamina with glandular trichomes on the adaxial and semicircular on the abaxial sides. It is 340 $\mu$ m thick and 280 $\mu$ m wide. The adaxial part of the midrib consists of small, squarish thick walled epidermal cells and the abaxial semicircular part possesses conical echinate epidermal cells (Fig 1.1).

#### Correspondence

**AR Florence**  
 Department of Botany, Scott  
 Christian College (Autonomous),  
 Nagercoil, Tamil Nadu, India



**Fig 1.1:** T.S. of leaf through midrib



**Fig 1.2:** T.S. of midrib enlarged



**Fig 1.3:** Einate thick walled epidermis of the midrib enlarged

(AdS – Adaxial side, EcE – Einate epidermis, Ep – Epidermis, GT – Ground tissue, MR – Midrib, Ph – Phloem, VS – Vascular strand, X – Xylem)

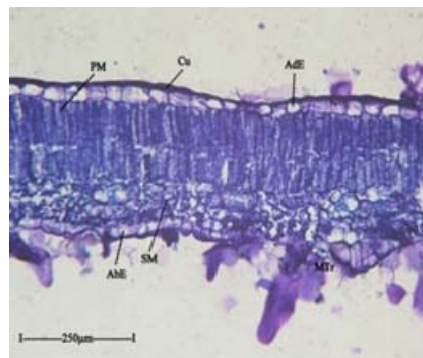
The einate epidermal cells are about 10µm in thick and the ground tissue is 2 to 4 layered with angular and compact cells. The vascular strand is broadly top shaped and includes 6 to 7 rows of xylem elements with narrow, thick walled and fibrous. Phloem occurs as thin layer along the lower end of the xylem strand (Fig 1.2 and 1.3).

### 3.2 Lamina

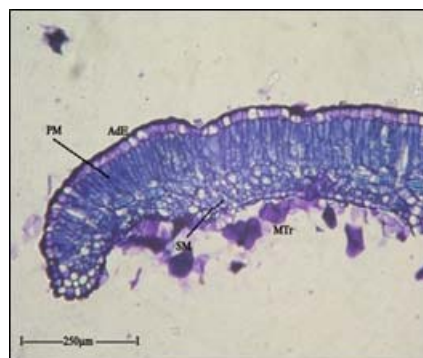
The lamina is dorsiventral, hypostomatic and 90µm thick (Fig 1.4). It consists of thick, rectangular, adaxial epidermal layer of cells with prominent cuticle. The abaxial epidermis includes squarish, smaller cells with thin cuticle. The trichomes are small, lobed and with dense mucilaginous substances. The palisade mesophyll includes two horizontal rows of cylindrical cells with 3 to 4 layers of spherical and lobed spongy parenchyma cells in the lower part.

### 3.3 Leaf margin

The leaf margin is slightly bent below, thin and semi circular with 100µm thick. It consists of squarish, thick walled epidermal layer. The palisade and the spongy parenchyma cells are reduced in size (Fig 1.5).

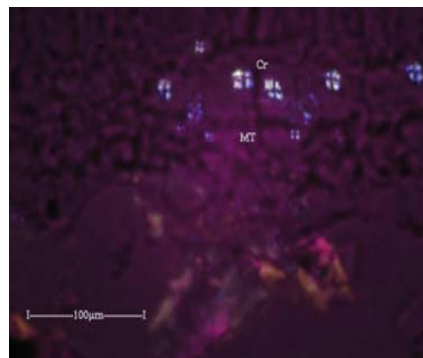


**Fig 1.4:** T.S. of Lamina



**Fig 1.5:** T.S. of Leaf Margin

Tetrad types of calcium oxalate crystals are seen in the mesophyll tissue. Each crystal is made up of 4 units forming a tetrad (Fig 1.6). The crystals are 10µm in diameter and sparsely distributed in the mesophyll.



**Fig 1.6:** Tetrad type of calcium oxalate crystals in the mesophyll

(AbE – Abaxial epidermis, AdE – Adaxial epidermis, Cr – Crystal, Cu – Cuticle, LM – Leaf margin, MT – Mesophyll tissue, MTr – Mucilaginous Trichome, PM – Palisade mesophyll, SM – Spongy mesophyll)

### 3.4 Anatomy of stem

Thick and quadrangular stem of about 1.6 mm was studied. The stem shows thin less prominent epidermal cells with dark inclusions. Inner to the intact epidermal layer there is a thick periderm cylinder which is about 400µm thick with

homogenous, rectangular and thin phellem cells. Inner to the phellem zone the cortical cylinder consists of thick walled parenchymatous cells. The cortex is 4 to 5 layered. The inner boundary of the cortex includes large discontinuous masses of gelatinous fibres which encircle the vascular cylinder (Fig 2.1 and 2.2).

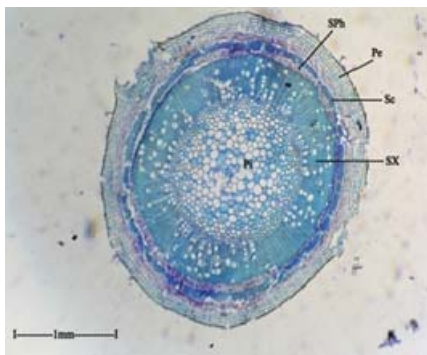


Fig 2.1: T.S. of stem entire view

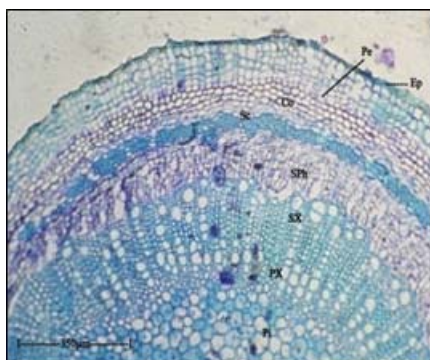


Fig 2.2: T.S. of stem a sector enlarged

The vascular cylinder is hollow and thick with outer continuous cylinder of radially arranged secondary phloem which measures about 110µm thick and includes sieve elements and parenchyma cells (Fig 2.3).

The secondary xylem consists of several radial chains of vessels and xylem fibres. The vessels are angular, wide thick walled and measures about 25µm in diameter (Fig 2.6). The xylem fibres are also thick walled with gelatinous layer (Fig 2.5). The inner boundary of the secondary xylem cylinder consists of several radial rows of primary xylem elements.

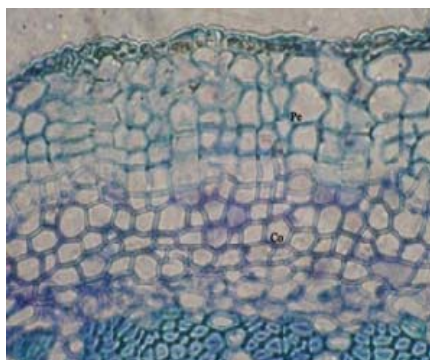


Fig 2.4: T.S. of stem showing periderm, cortex, gelatinous fibres and secondary phloem

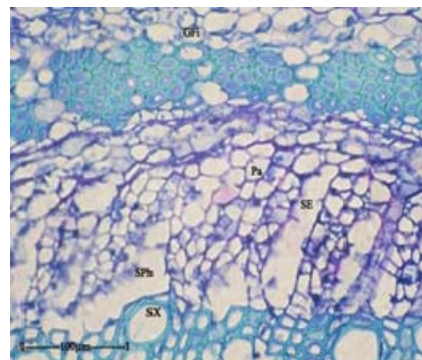


Fig 2.5: T.S. of secondary Xylem enlarged

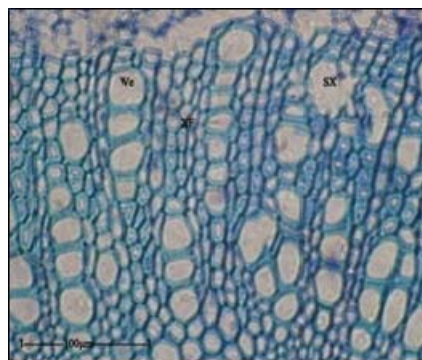


Fig 2.6: T.S. of stem showing secondary xylem, vessels and xylem fibres

(Co – Cortex, Ep – Epidermis, GFi – Gelatinous fibre, Pe – Periderm, SPh – Secondary phloem, SX – Secondary xylem, Ve – Vessel, XF – Xylem fibre, SE - Secondary epidermis, Pa - Parenchyma)

#### 4. Discussion

##### 4.1 Anatomy of leaf

Leaf anatomical features have been proved to be useful for species grouping and identification with great taxonomic significance [13-16]. The plant cuticle is a lipid layer of cutin intermeshed and coated with waxes that covers essentially all aerial organs and functions to restrict transpiration. By this mechanism, the cuticle is thought to play a critical role in plant drought tolerance through its ability to postpone the onset of cellular dehydration stress during drought [17-20]. During severe drought condition, nanoscale diffusion pathways are carried out by the crystalline wax of the cuticle membrane, and these crystalline waxes are thought to be a major determinant of cuticle permeability [19, 21-23]. Typical plant waxes consists of a homologous series of primary alcohols, aldehydes, alkanes, fatty acids, esters and sometimes cyclic compounds like triterpenoids and sterols [24]. But cuticular waxes are alkanes, alcohols, and aldehydes that show greater resistance to water diffusion [25]. The transverse section (T.S.) of *G. asiatica* leaf showed thick walled epidermal cells but the abaxial semicircular part has prominently conical echinate thick walled epidermal cells covered by the cuticle layer (Fig 1.1). Echinate epidermal cells are observable and are considered to be a very specific feature of *G. asiatica* because it is densely covered with bristle like outgrowths which is helpful in taxonomical identification. The cuticle layer prevents water loss during hot environment [26].

The distribution and arrangement of trichomes on plant surfaces contribute to the control of transpiration [27] and the

phenolic compounds found in these structures afford the organ of protection against UV-B radiation, which results from exposure to sunlight [28]. The occurrence of glandular trichomes in the adaxial and abaxial side of epidermis is a distinctive feature of *G. asiatica* (Fig 1.1). Dassanayake, Walston and Dallwitz reported the characters of *G. asiatica* leaf which has round minute white-glands beneath the leaves which secrete tannins, terpenes and oils [29, 30]. Trichomes, particularly glandular trichomes secrete essential oils [31-35] which normally evaporates and are released under high temperature and low humidity; hence their preponderance on the abaxial surface is largely for protection [36]. The glandular trichomes also show ecological significance, being associated with the plant interaction with the environment, interfering efficiently against the attack of herbivores [37-40] and contribute to the control of transpiration and temperature. The function of trichomes affords protection against pathogens [27, 38].

*G. asiatica* possess anomocytic type of stomata. The epidermal cells surrounding the stomata were found only in the abaxial epidermis of the leaf (Fig 1.4). Similar types were reported by Inamdar [41] in selected members of Verbenaceae and it act as a preventive mechanism against photo-inhibition, since the adaxial surface is more exposed to solar radiation [42]. Tetrad type of calcium oxalate crystals appear in the mesophyll (Fig 1.6). Similar findings were observed by Acharya *et al.* [43] and Kannan *et al.* [44] on *G. asiatica* stem. The appearance, location, distribution and morphology of these crystals are a constant characteristic among the species, being important for taxonomic purposes, as its deposition is genetically controlled [45]. These crystals are a part of the plant's passive defense system and act in deterring herbivory [46, 47].

#### 4.2 Anatomy of stem

Stems serve as a sink for several metabolites and as an important source of bioactive compounds. In the present investigation, the microscopic evaluation of transverse section shows prominent epidermal cells with dark inclusions, uniformly thick periderm and large discontinuous masses of gelatinous fibres which encircle the vascular cylinder. Inner to the phellem zone is thick parenchymatous cortical cylinder. Secondary xylem cylinder consists of several radial lines of primary xylem elements. The phloem tissue includes sieve elements and parenchyma cells (Fig 2.3). Rajesh *et al.* [48] noticed the replacement of epidermis by the periderm in the mature stem of *G. asiatica* which adds extra protection to the stem as it grows. The results of the present study reveal that the centripetal mode of formation of periderm from the epiderm and the variations observed in the anatomy of stem is similar to the reports of Kannan *et al.* [44] and Rajesh *et al.* [48]. The cracked cork cells with suberized wall, lenticels, patches of bundle cap fibres in the vascular cylinder of the present investigation is in agreement with the finding of Kannan *et al.* [44]. The suberized phellem is of great benefit during dry climate as it helps to seal off water loss. The thin layer of fibres found outside the vascular bundle exists to protect the outermost layer of phloem [49].

Secondary xylem consists of several radial chains of vessels and thick walled gelatinous layer of xylem fibres (Fig 2.4 and 2.5). Such characteristics are similar to the observations of Kannan *et al.* [44] and Rajesh *et al.* [48] in *G. asiatica*. Chew [49] noticed thick fibre band surrounding the innermost vascular bundles and the secondary growth proceeds, some of the parenchyma cells found within and outside this band become

meristematic and contribute to the formation of new vascular cambia and a new layer of fibres, providing them with extra strength and flexibility as the stem continuous to grow expand. The xylem vessels and xylem parenchyma are the main elements of secondary xylem that reflect ecological variation [50-53] and similar to the anatomical structure of the family Verbenaceae [32].

#### 5. Conclusion

The present findings of the leaf and stem anatomy of *G. asiatica* exhibited echinate epidermis, glandular trichomes, anomocytic type of stomata, periderm cylinder, phellem cells and vascular bundles which are explaining the typical structure of Verbenaceae. This study provides valuable information in anatomical identification.

#### 6. References

1. Apparanantham T, Chelladurai V, Subramaniam V. Some tribal folk medicines of point calimere (Kodikkarai) in Tamil Nadu. Bulletin of Medico-Ethno-Botanical Research 1982; 3:173-177.
2. Parekh J, Jadeja D, Chanda S. Efficacy of aqueous and methanol extracts of some medicinal plants for potential antibacterial activity. Turkish Journal of Biology. 2005; 29:203-210.
3. Parekh J, Chanda SV. *In vitro* antimicrobial activity and phytochemical analysis of some Indian medicinal plants. Turkish Journal of Biology. 2007; 31:53-58.
4. Vikneshwaran D, Viji M, Lakshmi KR. Ethnomedicinal plants survey and documentation related to Palaiyar community. Ethnobotanical Leaflets 2008; 12:1108-1115.
5. Kusuma G, Joshi VK. Nomenclature of Anukta Dravya. Ancient Science of Life 2010; 29(4):17-23.
6. Bakkiyaraj S, Pandiyaraj S. Evaluation of potential antimicrobial activity of some medicinal plants against common food-borne pathogenic microorganism. International Journal of Pharma and Biosciences. 2011; 2(2):B484- 491.
7. Anonymous. Indian Pharmacopoeia. 4<sup>th</sup> edn. Controller of publications, Government of India, Ministry of Health and Welfare, New Delhi, 1996; 2:53-54.
8. Cutler DF, Botha CEJ, Stevenson D. Plant anatomy: An Applied Approach. Wiley-Blackwell Publishing, Oxford, 2008, 302.
9. Gamble JS, Fischer CEC. Flora of Presidency of Madras. Adlard and Son Ltd., London, 1935; (1-3):1-2017.
10. Johansen DA. Plant Microtechnique. McGraw Hill Book Co, New York, 1940, 523.
11. O'Brien TP, Feder N, McCully ME. Polychromatic staining of plant cell walls by Toluidine Blue-O. Protoplasma 1964; 59:368-373.
12. Esau K. Plant Anatomy. John Wiley and Sons, New York, 1964, 767.
13. Metcalfe CR, Chalk L. Anatomy of Dicotyledones, Oxford: Clarendon Press, 1950, I, II.
14. Ogunidipe OT, Olantunji K. Vegetative anatomy of *Brachiaria obtusiflora* and *B. callopus*. Feddes Report 1991; 102:159-165.
15. Ogunidipe OT. Leaf anatomical studies on eleven species of *Zanthoxylum* Linn (Rutaceae). Phytomorphology 2002; 52:103-112.
16. Nwachukwu CU, Mbagwu FN. Anatomy studies on the petiole of some species of *Indigofera*. Agricultural Journal. 2006; 1(2):55-58.

17. Jenks MA, Eigenbrode SD, Lemieux B. Cuticular waxes of *Arabidopsis*. In: Somerville C, Megerowitz E, editors. *The Arabidopsis Book/American Society of Plant Biologists*, Rockville, MD, USA, 2002, 1.
18. Goodwin SM, Jenks MA. Plant cuticle function as a barrier to water loss. In: Jenks MA, Hasegawa PM, eds. *Plant Abiotic Stress*, Oxford: Blackwell Publishing Inc, 2005, 14-36.
19. Kosma DK, Jenks MA. Eco-physiological and molecular-genetic determinants of plant cuticle function in drought and salt stress tolerance. In: *Advances in molecular breeding toward drought and salt tolerant crops*. Springer, Netherlands, 2007, 91-120.
20. Samuels L, Kunst L, Jetter R. Sealing plant surfaces: cuticular wax formation by epidermal cells. *Plant Biology*, 2008, 59(1):683.
21. Riederer M, Schreiber L. Waxes: the transport barriers of plant cuticles. *Chemistry, Molecular Biology and Functions*, 1995; 6:131-156.
22. Kerstiens G. Signalling across the divide: a wider perspective of cuticular structure-function relationships". *Trends in Plant Science* 1996; 1:125-129.
23. Burghardt M, Friedmann A, Schreiber L, Riederer M. Modelling the effect of alcohol ethoxylates on diffusion of pesticides in the cuticular wax of *Chenopodium album* leaves. *Pest Management Science* 2006; 62(2):137-147.
24. Jetter R, Kunst L, Samuels AL. Composition of plant cuticular waxes. In: Riederer M, Maller C, eds. *Biology of the Plant Cuticle*. Blackwell publishing, Oxford, 2006, 182-215.
25. Grncarevic M, Radler F. The effect of wax components on cuticular transpiration-model experiments. *Planta* 1967; 75(1):23-27.
26. Purves KW, Sadava D, Oriens HG, Heller CH. The plant body. In *The Science of biology*. Sinauer Associates, Inc., Sunderland, MA, 2004, 171.
27. Bosabalidis AM. Structural features of *Origanum* species. In: Kintzios SE, eds. *Oregano: The genera origanum and Lippia*, edn 1, Taylor and Francis, London, 2002, 11-16.
28. Liakoura V, Manetas Y, Karabourniotis G. Seasonal fluctuations in the concentration of UV-absorbing compounds in the leaves of some Mediterranean plants under field conditions. *Physiologia Plantarum* 2001; 111(4):491-500.
29. Dassanayake MD. *A Revised Handbook to the Flora of Ceylon*. Amerind Publishing Company, New Delhi, 1983; 4:394-397.
30. Walston L, Dallwitz MJ. *The families of flowering plants: Descriptions, illustrations, identification, and information retrieval*. (Version: 14<sup>th</sup> December 2000), 1992, 51-62.
31. Solereder H. *Systematic Anatomy of the Dicotyledons*. Oxford: Clarendon Press, 1908, 643.
32. Metcalfe CR, Chalk L. *Anatomy of the Dicotyledones*. Oxford University Press, Cambridge, 1957; I-II:1459.
33. Theobald WL, Krahulik JL, Rollins R. Trichome description and classification. In: Metcalfe CR, Chalk L, eds. *Anatomy of the dicotyledones, systematic anatomy of the leaf and stem*. Oxford: Oxford Clarendon Press, 1979; 1:40-43.
34. Judd WS, Campbell CS, Kellogg EA, Stevens PF. *Plant Systematics - A Phylogenetic Approach*. Sinauer Associates, Inc. Sunderland, Massachusetts, 1999, 464-478.
35. Passos JL, Meira RMSA, Barbosa LCA. Foliar anatomy of the species *Lantana camara* and *Lantana radula* (Verbenaceae). *Planta Daninha*, 2009; 27(4):1-8.
36. Gershenzen J, Croteau R. Terpenoids. Rosenthal GA, Berenbaum MR. eds. In: *Herbivores: Their interactions with secondary Plant Metabolites*. The chemical participants Academic Press, San Diego, Calif, 1991; 1:165-219.
37. Levin DA. The role of trichomes in plant defence. *Quarterly Review of Biology*, The University of Chicago Press, Chicago, 1973; 48:3-15.
38. Johnson B. Plant pubescence: an ecological perspective. *Botanical Review* 1975; 41:233-258.
39. Rodriguez E, Hwaly PL, Mehta I. *Biology and Chemistry of Plant Trichomes*. Plenum: New York, 1984, 255.
40. Marquis RJ. The selective impact of herbivory. In: Fritz RS, Simms EL, eds. *Plant Resistance to Herbivory and Pathogens-Ecology, Evolution and Genetics*. The University of Chicago Press, Chicago, 1992, 301-325.
41. Inamdar JA. Epidermal structure and stomatal ontogeny in some Polygonales and Centrospermae. *Annals of Botany* 1969; 33(3):541-552.
42. Smith WK, Bell DT, Shepherd KA. Associations between leaf structure. Orientation and Sunlight exposure in five western Australian communities. *American Journal of Botany*. 1998; 85(1):56-63.
43. Acharya SN, Acharya SR, Shah BM, Santani, DD. Development of pharmacognostical parameters and estimation of beta-sitosterol using HPTLC in roots of *Gmelina arborea* Roxb. *Journal of Pharmacognosy*. 2012; 4(30):1-9.
44. Kannan R, Prasant K, Babu UV. Botanical pharmacognosy of stem of *Gmelina asiatica* Linn. *Ancient Science Life*. 2012; 31(4):190-193.
45. Franceschi VR, Nakata PA. Calcium oxalate in plants: formation and function. *Annual Review of Plant Biology* 2005; 56:47-71.
46. Esau K, Cheadle IV. Secondary growth in *Bougainvillea*. *Annals of Botany* 1969; 33:807-819.
47. Franceschi VR, Horner HT. Calcium oxalate crystals in plants. *The Botanical Review* 1980; 46(4):361-427.
48. Rajesh NK, Silvia SP, Preethi K, Kumar E, Satyanarayana T. Pharmacognostic standardization of stem of *Gmelina asiatica* Linn. *International Journal of Chemistry and Pharmaceutical Sciences*. 2013; 1(3):187-192.
49. Chew S. Anatomical features of *Bougainvillea* (Nyctaginaceae). *Journal of Studies by Undergraduate Researchers at Guelph*, 2010; 4(1):72-78.
50. Chowdhury KA. The role of initial parenchyma in the transformation of the structure diffuses porous to ring-porous in the secondary xylem of the genus *Gmelina* Linn. *Proceedings of the National Institute of Sciences of India* 1953; 19:361-369.
51. Akachuku AE. The effects of some extrinsic and intrinsic factors on the proportion of vessels in *Gmelina arborea* Roxb. *Wood Science Technology* 1985; 19:5-12.
52. Akachuku AE, Burley J. Variation of anatomy of *Gmelina arborea* Roxb. In *Nigerian plantations*. *International Association of Wood Anatomists Bulletin* 1979; 4:94-99.
53. Ohtani J, Jing W, Fukazawa K, Qun XS. Multiple perforation plates in *Gmelina arborea* Roxb. (Verbenaceae). *The International Association of Wood Anatomists Bulletin* 1989; 10:35-41.