



E-ISSN: 2278-4136  
P-ISSN: 2349-8234  
JPP 2017; 6(5): 838-842  
Received: 02-07-2017  
Accepted: 03-08-2017

**Shakeel Ahmad Bhat**  
Division of Agricultural  
Engineering, SKUAST Kashmir,  
India

**Ishfaq Hamid**  
Aligarh Muslim University,  
Uttar Pradesh, India

**Mehraj U Din Dar**  
Punjab Agricultural University,  
Punjab, India

**Daniyal Rasool**  
Department of Water Resources,  
NIT Srinagar, Jammu and  
Kashmir, India

**Bashir Ahmad Pandit**  
Division of Agricultural  
Engineering, SKUAST Kashmir,  
India

**Shafat Khan**  
Indian Institute of Technology  
Kharagpur, West Bengal, India

#### Correspondence

**Shakeel Ahmad Bhat**  
Division of Agricultural  
Engineering, SKUAST Kashmir,  
India

## Soil erosion modeling using RUSLE & GIS on micro watershed of J&K

**Shakeel Ahmad Bhat, Ishfaq Hamid, Mehraj U Din Dar, Daniyal Rasool, Bashir Ahmad Pandit and Shafat Khan**

#### Abstract

A comprehensive methodology that integrates Revised Universal Soil Loss Equation (RUSLE) model and Geographic Information System (GIS) techniques was adopted to determine the soil erosion vulnerability of a micro-watershed in J&K, India. The spatial pattern of annual soil erosion rate was obtained by integrating geo-environmental variables in a raster based GIS method. GIS data layers including, rainfall erosivity (R), soil erodibility (K), slope length and steepness (LS), cover management (C) and conservation practice (P) factors were computed to determine their effects on average annual soil loss in the area. The resultant map of annual soil erosion shows a maximum soil loss of 2.9246 t h<sup>-1</sup> y<sup>-1</sup> with a close relation to grass land areas, agricultural lands and orchards (with low LS). The spatial erosion maps generated with RUSLE method and GIS can serve as effective inputs in deriving strategies for land planning and management in the environmentally sensitive agricultural areas.

**Keywords:** Soil erosion, Revised Universal Soil Loss Equation (RUSLE), GIS, Micro-watershed, Kashmir, J&K

#### Introduction

Soil erosion and related degradation of land resources are highly significant spatio-temporal phenomena in many countries (Fistikoglu and Harmancioglu, 2002; Hoyos, 2005; Pandey *et al.*, 2009) [6]. Soil erosion, generally associated with agricultural practices in tropical and semi-arid countries, leads to decline in soil fertility, brings on a series of negative impacts of environmental problems, and has become a threat to sustainable agricultural production and water quality in the region. It has been estimated that in India about 5334 m-tonnes of soil are being removed annually due to various reasons (Narayan and Babu, 1983; Pandey *et al.*, 2007) [4, 5]. In recent years, as part of environment and land degradation assessment policy for sustainable agriculture and development, soil erosion is increasingly being recognized as a hazard which is more serious in mountain areas (Millward and Mersey, 1999; Angima *et al.*, 2003; Jasrotia and Singh, 2006; Dabral *et al.*, 2008; Sharma, 2010) [1, 7] and agricultural lands. In many regions, unchecked soil erosion and associated land degradation have made vast areas economically unproductive. Often, a quantitative assessment is needed to infer the extent and magnitude of soil erosion problems so that effective management strategies can be resorted to. But, the complexity of the variables makes precise estimation or prediction of erosion difficult. The latest advances in spatial information technology have augmented the existing methods and have provided efficient methods of monitoring, analysis and management of earth resources. Digital elevation model (DEM) along with remote sensing data and GIS can be successfully used to enable rapid as well as detailed assessment of erosion hazards (Jain *et al.*, 2001; Srinivas *et al.*, 2002; Kouli *et al.*, 2009) [10]. Spatial and quantitative information on soil erosion on a micro-watershed scale contributes significantly to the planning for soil conservation, erosion control, and management of the watershed environment. The results of estimation of soil loss in the micro-watersheds were carried out on an experiment basis in Himalayan regions using different prediction techniques (Shrestha, 1997; Douglas, 2006; Van De *et al.*, 2008) [9, 14].

#### Study area

The site is situated at latitude (33.9770 - 34.0256N) and longitude of (74.6962 -74.7246E) which is located in the province of Kashmir and covers an area of 4197.80 ha. The region is highly undulating and exhibits a uniform topography, with a mean elevation of 5770 m above msl and a general northwest terrain slope. The study area receives an annual average rainfall of 690 mm and exhibits a dry climatic condition respectively.

Biological functions of adiponectin depend on not only the serum circulating concentration of hormone but also the expression level and function of its specific receptors including AdipoR1 and AdipoR2. AdipoR1 is most Built-up can be found only at distant areas. Geomorphologically, the

micro-watershed is characterized by steep structural hills, denudation hills, grasslands, orchards and agricultural lands with thin vegetation. The soil texture is gravelly clay followed by clayey with high silt.

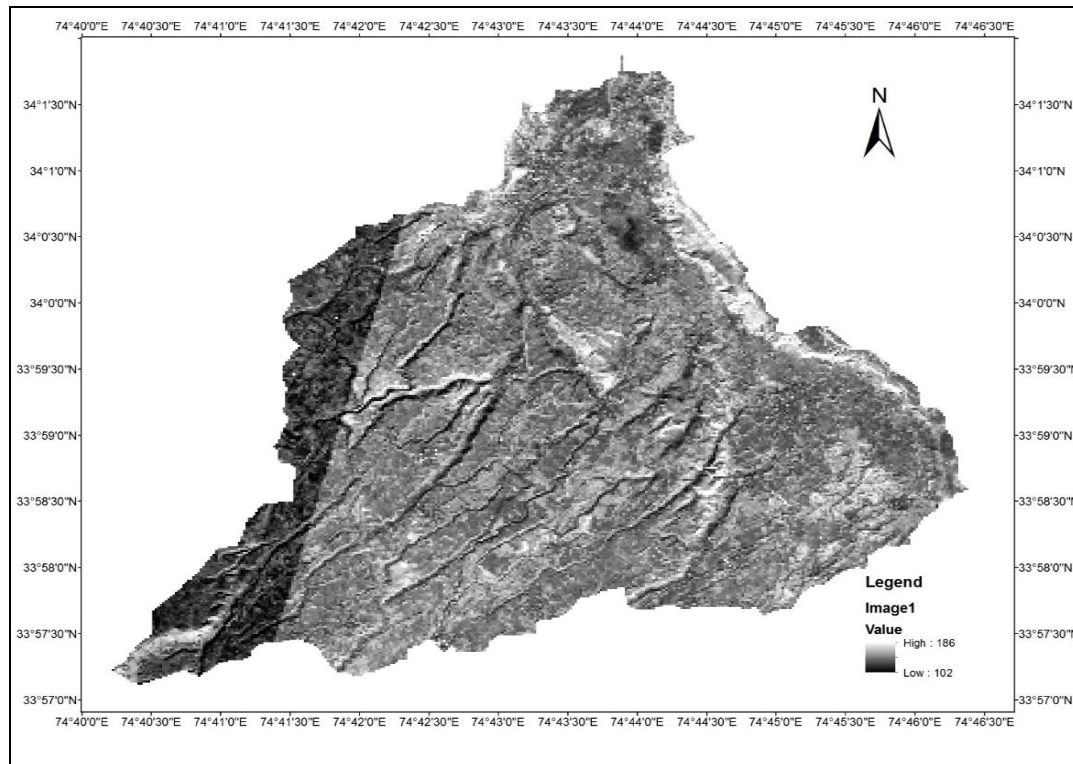


Fig 1: Location of study area

## Methodology

### Annual soil loss estimation method

The emergence of soil erosion models has enabled the study of soil erosion, especially for conservation purposes, in effective and acceptable level of accuracy. To estimate soil erosion and to develop optimal soil erosion management plans, many erosion models, such as Universal Soil Loss Equation/Revised Universal Soil Loss Equation (USLE/RUSLE), Water Erosion Prediction Project (WEPP), Soil Erosion Model for Mediterranean Regions (SEMED), Areal Non-point Source Watershed Environment Response Simulation (ANSWERS), Limburg Soil Erosion Model (LISEM), European Soil Erosion Model (EUROSEM), Soil and Water Assessment Tool (SWAT), Simulator for Water Resources in Rural Basins (SWRRB), Agricultural Non-point Source pollution model (AGNPS), etc. were used in regional scale assessment. Each model has its own characteristics and application scopes (Boggs *et al.*, 2001; Lu *et al.*, 2004; Dabral *et al.*, 2008; Tian *et al.*, 2009). The dominant model applied worldwide to soil loss prediction is USLE/RUSLE, because of its convenience in application and compatibility with GIS (Millward and Mersey, 1999; Jain *et al.*, 2001; Lu *et al.*, 2004; Jasrotia and Singh, 2006; Dabral *et al.*, 2008; Kouli *et al.*, 2009; Pandey *et al.*, 2009; Bonilla *et al.*, 2010) [1, 6, 1]. Although it is an empirical model, it not only predicts erosion rates of ungauged watersheds using knowledge of the watershed characteristics and local hydro climatic conditions, but also presents the spatial heterogeneity of soil erosion that is too feasible with reasonable costs and better accuracy in larger areas (Angima *et al.*, 2003). The RUSLE has been widely used for both agricultural and forest watersheds to predict the average annual soil loss by introducing improved

means of computing the soil erosion factors (Wischmeier and Smith, 1978; Renard *et al.*, 1997) [15]. This equation is a function of five input factors in raster data format: rainfall erosivity; soil erodibility; slope length and steepness; cover management; and support practice. These factors vary over space and time and depend on other input variables. Therefore, soil erosion within each pixel was estimated with the RUSLE. The RUSLE method is expressed as:

$$A = R.K.L.S.C.P \quad 1$$

where A is the computed spatial average of soil loss over a period selected for R, usually on yearly basis ( $t \text{ ha}^{-1} \text{ y}^{-1}$ ); R is the rainfall-runoff erosivity factor ( $\text{MJ mm ha}^{-1} \text{ h}^{-1} \text{ y}^{-1}$ ); K is the soil erodibility factor ( $t \text{ ha h ha}^{-1} \text{ MJ}^{-1} \text{ mm}^{-1}$ ); LS is the slope length steepness factor (dimensionless); C is the cover management factor (dimensionless, ranging between 0 and 1.5); and P is the erosion control (conservation support) practices factor (dimensionless, ranging between 0 and 1).

### Data processing and RUSLE factors generation

The RUSLE model has been widely used for both agricultural and forest watersheds to predict the average annual soil loss. It is a non data-demanding and less expensive erosion model; therefore it can be fed by data usually available in institutional databases, such as low or medium spatial resolution satellite images and limited rainfall data etc. The methodology used in the present work was the implementation of RUSLE equation in a raster GIS environment for the calculation of specific factors and annual soil loss of the area under investigation. The climatic and terrain factors which are used in the equation were derived from rainfall data collected from Indian

Meteorological Department (IMD), satellite image, soil texture map of soil survey organization, Kerala and Survey of India (SOI) toposheets. IRS-P6 LISS-III digital data of the year 2008 with resolution of 23.5 m was used for assessment of vegetation parameters in the area. SOI toposheets were used to create the digital database for the boundary, drainage network and contour map (20 m intervals) of the sub-watershed. The cell size of all the data generated was kept in to 30m-30 m, in order to make uniform spatial analysis environment in the ArcGIS10.2.

### Rainfall erosivity (R)

The rainfall factor, an index unit, is a measure of the erosive force of a specific rainfall. This is determined as a function of the volume, intensity and duration of rainfall and can be computed from a single storm, or a series of storms to include cumulative erosivity from any time period. Raindrop/splash erosion is the dominant type of erosion in barren soil surfaces. Rainfall data of 5 years (2000-2013) collected from Indian Meteorological Department (IMD) were used for calculating R-factor using the following relationship developed by Wischmeier and Smith (1978) <sup>[15]</sup> and modified by Arnoldus (1980): R is the rainfall erosivity factor (MJ mm ha<sup>1</sup>), Pi is the monthly rainfall (mm), and P is the annual rainfall (mm). For the present analysis, R-factor for the Micro-watershed (1E1C4a2) was computed from available rain gauge data, because the watershed has no record of daily rainfall intensity. The spatial interpolation techniques available in the ArcGIS software were used along with rainfall data of faraway rain gauge stations for assessing the spatial variability in the rainfall and rainfall erosivity in the study area. The rainfall erosivity factor (R) for the years 2000-2013 was found to be in the range of 330.824 MJ.mm.(ha.h.yr)<sup>-1</sup>

$$R \text{ factor} = 79 + 0.363R \quad 2$$

Where,

R is the average annual rainfall in mm.

### Soil erodibility factor (K)

Different soil types are naturally resistant and susceptible to more erosion than other soils and are function of grain size, drainage potential, structural integrity, organic content and cohesiveness. Erodibility of soil is its resistance to both detachment and transport. Because of thick forested nature of the watershed, detailed field surveys of soils in the area were not possible. So a generalized soil texture map collected from the soil science department SKUAST-K, was used for the preparation of K factor map and the soil types are grouped into four different textural classes. The corresponding K values for the soil types were identified from the soil erodibility nomograph (USDA 1978) by considering the particle size, organic matter content and permeability class. The estimated K values for the textural groups vary from 0.09 to 0.27 t ha h ha

### Slope length and steepness factor (LS)

Length and steepness of a slope affects the total sediment yield from the site and is accounted by the LS-factor in RUSLE model. In addition to steepness and length, the other factors such as compaction, consolidation and disturbance of the soil were also considered while generating the LS-factor. Erosion increases with slope steepness but, in contrast to the L-factor representing the effects of slope length, the RUSLE makes no differentiation between rill and inter-rill erosion in the S-factor that computes the effect of slope steepness on soil

loss (Renard *et al.*, 1997; Lu *et al.*, 2004; Krishna Bahadur, 2009). The combined LS-factor was computed for the watershed by means of ArcInfo ArcGIS Spatial analyst extension using the DEM following the equation (eq. 3), as proposed by Moore and Burch (1986a,b). The computation of LS requires factors such as flow accumulation and slope steepness. The flow accumulation and slope steepness were computed from the DEM using ArcGIS Spatial analyst plus and arc hydro extension.

$$LS = \left[ \frac{\text{Flow accumulation} \times \text{Cell size}}{22.13} \right]^{0.4} \times \left[ \frac{\left( \sin \left( \frac{\theta \times 3.14}{180} \right) \right)}{0.0896} \right]^{1.3} \quad 3$$

Where accumulation flow denotes the accumulated upslope contributing area for a given cell, LS is combined slope length and slope steepness factor, cell size of grid cell (for this study 30 m) and  $\theta$  is slope in degrees. The LS factor value in the study area varies from 0 to 22.90, with mean and standard deviation of 2.04 and 1.95 respectively. Majority of the study area has LS value less than 5 and some specific areas only showing values higher than 10.

### Cover management factor (C)

The C-factor represents the effect of soil-disturbing activities, plants, crop sequence and productivity level, soil cover and subsurface bio-mass on soil erosion. It is defined as the ratio of soil loss from land cropped under specific conditions to the corresponding loss from clean-tilled, continuous fallow (Wischmeier and Smith, 1978) <sup>[15]</sup>. Currently, due to the variety of land cover patterns with spatial and temporal variations, satellite remote sensing data sets were used for the assessment of C-factor (Karydas *et al.*, 2009; Tian *et al.*, 2009). The Normalized Difference Vegetation Index (NDVI), an indicator of the vegetation vigor and health is used along with the following formula (eq. 4) to generate the C-factor value image for the study area (Zhou *et al.*, 2008; Kouli *et al.*, 2009).

$$C = \exp \left[ -\alpha \frac{NDVI}{(\beta - NDVI)} \right] \quad (4)$$

Where  $\alpha$  and  $\beta$  are unitless parameters that determine the shape of the curve relating to NDVI and the C-factor. Van der Knijff *et al.* (2000) found that this scaling approach gave better results than assuming a linear relationship and the values of 2 and 1 were selected for the parameters  $\alpha$  and  $\beta$ , respectively. This equation was successfully applied for assessing the C-factor of areas with similar terrain and climatic conditions (Prasanna kumar *et al.*, 2011a,b). The C-factor in the present case ranges between 0.01 and 0.9.

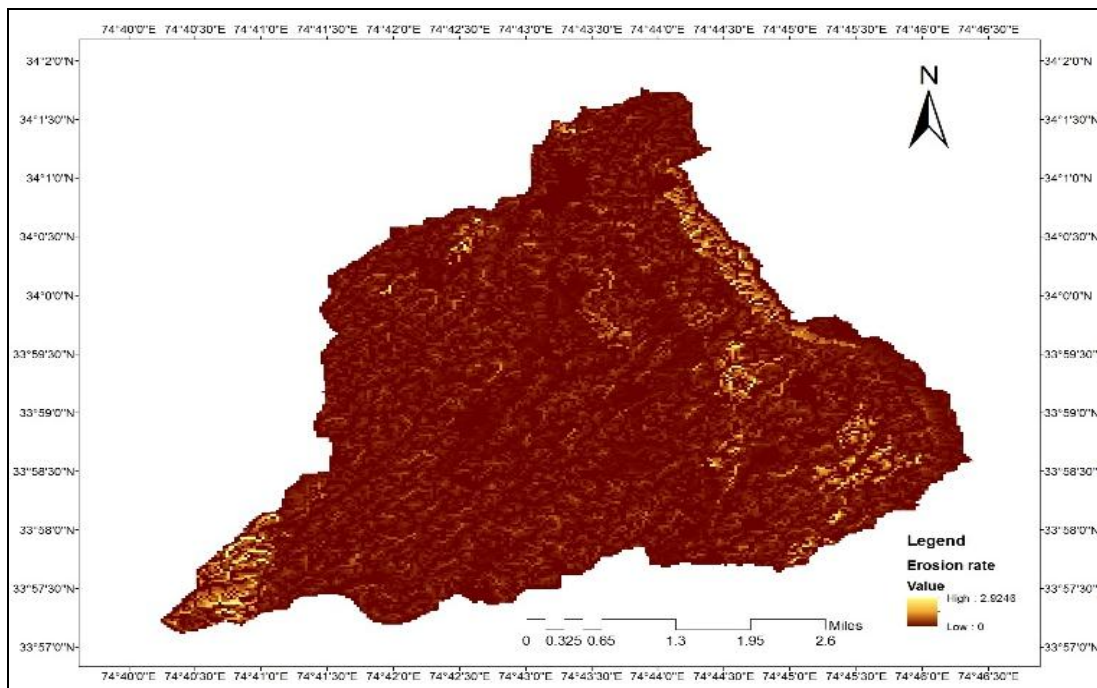
### Conservation practice factor (P)

The support practice factor (P-factor) is the soil-loss ratio with a specific support practice to the corresponding soil loss with up and down slope tillage (Renard *et al.*, 1997). In the present study the P-factor map was derived from the land use/land cover and support factors. The values of P-factor ranges from 0 to 1, in which the highest value is assigned to areas with no conservation practices (wastelands); the minimum values correspond to built-up-land and plantation area with strip and contour cropping. The lower the P value, the more effective the conservation practices.

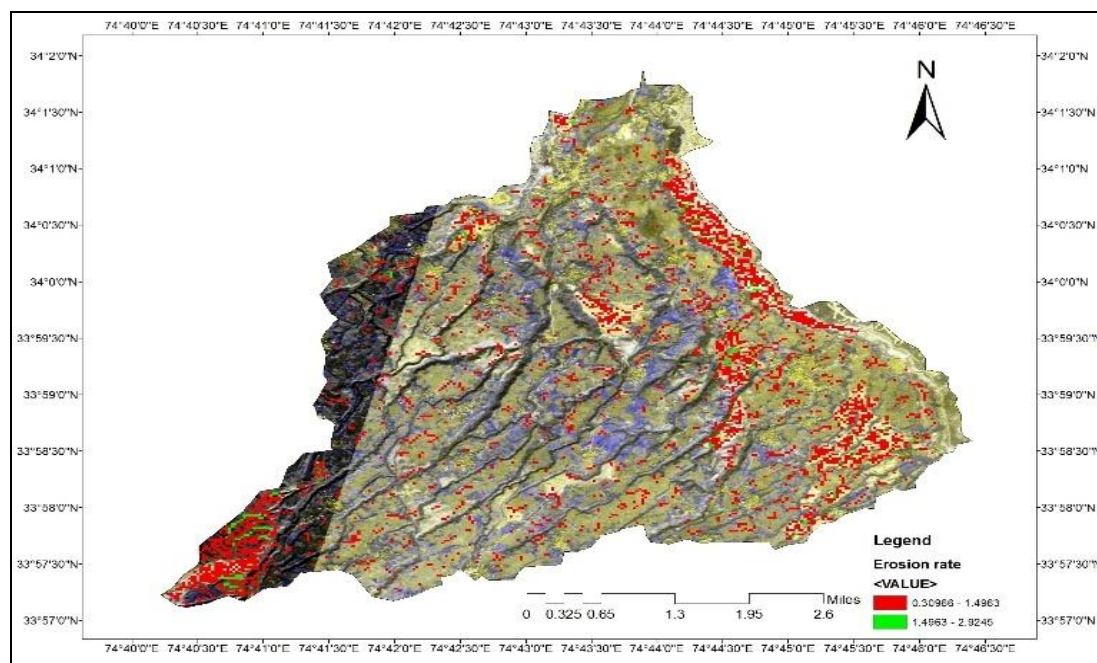
**Results and Discussion**

RUSLE is a straightforward and empirically based model that has the ability to predict long term average annual rate of soil erosion on slopes using data on rainfall pattern, soil type, topography, crop system and management practices. In the present research, annual soil erosion rate map was generated

for Micro-watershed (1E1C4a2), an agricultural area, which represents uniform terrain characteristics. Several data sources were used for the generation of RUSLE model input factors and are stored as raster GIS layers in the ArcInfo ArcGIS software.



**Fig 2: Erosion rate (a)**



**Fig 2: Erosion rate (b)**

Potential annual soil loss is estimated from the product of factors (R, K, LS, C and P) which represents geo-environmental scenario of the study area in spatial analyst extension of ArcGIS software. The average soil erosion rate estimated for the upland sub-watershed ranges from 0 to 2.9246 t h<sup>-1</sup> y<sup>-1</sup> with a standard deviation of 0.175 t h<sup>-1</sup> y<sup>-1</sup> (Fig. 2a,b). The results were correlated with similar studies carried out in different parts of the state for validating and to ensure the applicability of the proposed method in the study area. Soil erosion rate calculated in these studies are found to

be appropriate and matching. The results were also compared with the studies carried out in areas having similar geo-environmental and rainfall characteristics (Bacchi *et al.*, 2000; Mati, 2000; Shiono *et al.*, 2002; al., 2008; Adediji *et al.*, 2010; Aamir *et al.*, 2013) and were found to be comparable with an annual average soil erosion rate. The assessed average annual soil loss of Micro-watershed (1E1C4a2) was grouped into different classes based on the minimum and maximum values and the spatial distribution of each class is presented in Fig. 2b. The grouping of different soil erosion severity zones

was carried out by considering the field conditions. The results show that about 92% of the study area is classified as low potential erosion risk ( $<1.5 \text{ t h}^{-1} \text{ y}^{-1}$ ), while rest of the area is under moderate to high erosion risk. The spatial pattern of classified soil erosion risk zones indicates that the areas with high and severe erosion risk are located in the west, northwest and southern regions of the study area, while the areas with low erosion risk are in the eastern and central parts of the study area. In order to assess the role of human intervention in the soil erosion risk in the micro-watershed, land use/land cover map (Fig. 3) of the area was overlaid with classified soil erosion risk zone map. With the spatial pattern, the higher levels of soil erosion risk zones are distributed on the grassland, degraded plantation, and hilly areas. The area with the larger gradient is mostly covered by high fraction vegetation, and is on lower level of soil erosion risk than that with little gradient. At the same time the spatial pattern of annual average soil erosion risk map shows high spatial correlation with LS-factor map, and it indicates the role played by topography in controlling soil movement in a watershed. Therefore, the areas with high LS-factor and degraded agricultural and grasslands need immediate attention in soil conservation point of view.

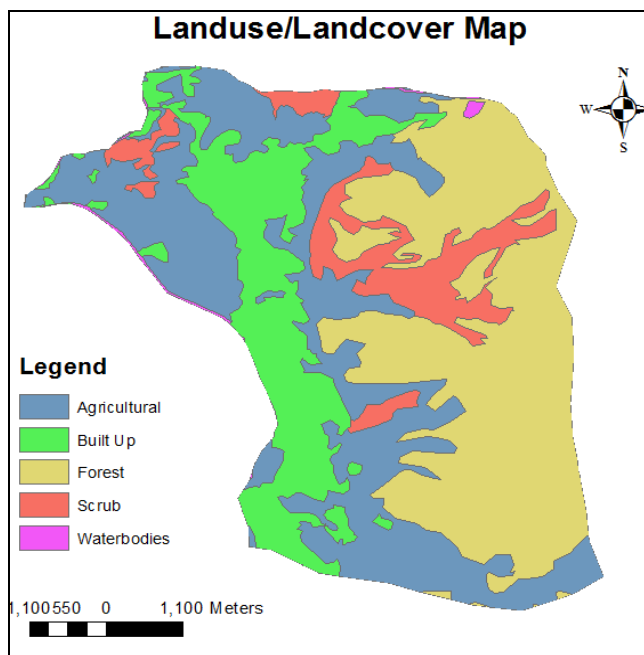


Fig 3

### Conclusion

A quantitative assessment of average annual soil loss for Micro-watershed (1E1C4a2) is made with GIS based well-known RUSLE equation considering rainfall, soil, land use and topographic datasets. In the micro-watershed the land use pattern in areas prone to soil erosion indicates that areas with natural forest cover in the head water regions have minimum rate of soil erosion while areas with human intervention have higher rate of soil erosion ( $2.9246 \text{ t h}^{-1} \text{ y}^{-1}$ ). Terrain alterations along with high LS-factor and rainfall prompt these areas to be more susceptible to soil erosion. The predicted amount of soil loss and its spatial distribution can provide a basis for comprehensive management and sustainable land use for the watershed. The areas with higher soil erosion warrant special priority for the implementation of control measures in order to reduce loss of fertility. While the present analytical model helps mapping of vulnerability zones, micro-scale data on rainfall intensity, soil texture and field measurements can

augment the prediction capability and accuracy of remote sensing and GIS based analysis.

### References

1. Millward AA, Mersey JE. Adapting the RUSLE to model soil erosion potential in a mountainous tropical watershed. *CATENA*. 1999; 38(2):109e129.
2. Moore ID, Burch GJ. Physical basis of the length slope factor in the Universal Soil Loss Equation. *Soil Science Society of America*. 1986a; 50(5):1294e1298.
3. Moore ID, Burch GJ. Modeling erosion and deposition. Topographic effects. *Transactions of American Society of Agriculture Engineering*. 1986b; 29(6):1624e1630.
4. Narayan VVD, Babu R. Estimation of soil erosion in India. *Journal of Irrigation and Drainage Engineering*. 1983; 109(4):419e434.
5. Pandey A, Chowdary VM, Mal BC. Identification of critical erosion prone areas in the small agricultural watershed using USLE, GIS and remote sensing. *Water Resources Management*. 2007; 21:729e746.
6. Pandey A, Mathur A, Mishra SK, Mal BC. Soil erosion modeling of a Himalayan watershed using RS and GIS. *Environmental Earth Sciences*. 2009; 59(2):399e410.
7. Sharma A. Integrating terrain and vegetation indices for identifying potential soil erosion risk area. *Geo-Spatial Information Science*. 2010; 13(3):201e209.
8. Shiono T, Kamimura K, Okushima S, Fukumoto M. Soil loss estimation on a local scale for soil conservation planning. *Japan Agricultural Research Quarterly*. 2002; 36(3):157e161.
9. Shrestha DP. Assessment of soil erosion in the Nepalese Himalaya, a case study in LikhuKhola valley, middle mountain region. *Land Husbandry*. 1997; 2(1):59e80.
10. Srinivas CV, Maji AK, Reddy GPO, Chary GR. Assessment of soil erosion using remote sensing and GIS in Nagpur district, Maharashtra for prioritisation and delineation of conservation units. *Journal Indian Society of Remote Sensing*. 2002; 30(4):197e212.
11. Tian YC, Zhou YM, Wu BF, Zhou WF. Risk Assessment of Water Soil Erosion in Upper Basin of Miyun Reservoir. 2009, 57.
12. Environmental Geology, Beijing, China. 937e942. USDA, Predicting Rainfall Erosion Losses. A Guide to Conservation Planning, Washington DC, 1978.
13. Van der Knijff JM, Jones RJA, Montanarella L. Soil Erosion Risk Assessment in Europe. EUR 19044 EN. Office for Official Publications of the European Communities, Luxembourg, 2000, 34.
14. Van De N, Douglas I, McMorrow J, Lindley S, Binh DKNT, Van TT, *et al*. Erosion and nutrient loss on sloping land under intense cultivation in southern Vietnam. *Geographical Research*. 2008; 46(1):4e16.
15. Wischmeier WH, Smith DD. Predicting Rainfall Erosion Losses e A Guide to Conservation Planning. *Agriculture Handbook No. 537*. US Department of Agriculture Science and Education Administration, Washington, DC, USA, 1978, 163.