



E-ISSN: 2278-4136

P-ISSN: 2349-8234

[www.phytojournal.com](http://www.phytojournal.com)

JPP 2021; 10(1): 131-136

Received: 15-11-2020

Accepted: 23-12-2020

**Kolawole OS**

Department of Biological Sciences, Federal University of Kashere, Gombe State, Nigeria

**Isyaka MS**

Department of Chemical Sciences, Federal University of Kashere, Gombe State, Nigeria

**Dahiru M**

Department of Biological Sciences, Federal University of Kashere, Gombe State, Nigeria

**Gani AM**

Department of Biological Sciences, Federal University of Kashere, Gombe State, Nigeria

## Chemical constituents of leaves of *Senna singueana* (Del.) lock

Kolawole OS, Isyaka MS, Dahiru M and Gani AM

DOI: <https://doi.org/10.22271/phyto.2021.v10.i1b.13299>

**Abstract**

We report the preliminary phytochemical screening and GC-MS analysis of leaves of *Senna singueana* (Del.) Lock. This plant is endemic to East and West Africa, in particular Ethiopia and Cote D'Ivoire. The dry powdered leaf of *Senna singueana* was extracted with ethanol to give the crude extract. The chemical constituents of the crude extracts of the leaves of *Senna singueana* (Del.) Lock collected from Kashere, Gombe State – Nigeria were analyzed using GCMS spectrometry and preliminary phytochemical screening. The mass spectra of the constituents present in the extracts were interpreted by the comparison with data library of the National Institute of Standard and Technology (NIST) having over 62,000 patterns. The GCMS results indicated the presence of eighteen compounds including, 3-tridecane, 1,3-benzenediol, 3-*O*-methyl-*D*-glucose, (*Z*)-13-docosenoic acid, *Z*-7-tetradecanal and 2,6-dimethyl-1,7-octadien-3-ol which are in good agreement with the results of the phytochemical investigation of the ethanolic extract of the leaves, indicating the presence of steroids, alkaloids, saponins, phenols and reducing sugars. The presence of these phytoconstituents may be responsible for the pharmacological properties of *Senna singueana* as they are recommended as a plant of phytotherapeutically significant.

**Keywords:** Ethanolic extract, GC-MS analysis, *Senna singueana*, phytochemical screening

**Introduction**

The genus *Senna* with about 600 species is one of the largest genera belonging to the Fabaceae and formally included in the genus *Cassia* (Kolawole, 2017)<sup>[11, 13]</sup>. It comprises of shrubs, trees and is widely spread in the tropics (Mabberley, 2008)<sup>[16]</sup>.

*Senna singueana* is a tropical plant commonly found in the East and West Africa belonging to the family Fabaceae, sub-family Caesalpinioideae, tribe Cassiae (Hibsen *et al.*, 2016)<sup>[8]</sup> and subtribe Cassinae (Kolawole and Abdulrahman, 2019)<sup>[12]</sup>. It is called Rumfu in Hausa language (Gbile, 2018; Kolawole, 2017)<sup>[11, 13]</sup>. Several phytochemicals have previously been reported from the genus *Senna* including flavonoids, anthraquinones, stilbernes, terpenes, alkaloids, and proanthocyanidins (Mondal, 2014). However, very few studies have been conducted on *Senna singueana*.

The root and stem bark extract of *Senna singueana* have been used for treatment of many ailments and diseases across many African countries ranging from skin cancer in Ethiopia (Hibsen, 2012)<sup>[7]</sup>, liver diseases in Egypt (Sibeh *et al.*, 2017), treatment of diabetes in Nigeria (Mukhtar *et al.*, 2020), malaria in Ethiopia (Hibsen, 2012)<sup>[7]</sup> and as a pain killer in Malawi (Kariuki *et al.*, 2012)<sup>[9]</sup>. Other traditional uses of the plant are in the treatment of convulsion, inflammatory conditions, gonorrhoea, constipation and heartburn (Ezuruike and Prieto, 2014)<sup>[2]</sup>. GC-MS method of analysis is an interesting tool for testing amount of some active principles in herbs used in cosmetic, drugs, pharmaceutical or food industry, environmental and forensic applications (Uma *et al.*, 2009)<sup>[13]</sup>. GC-MS method of analysis also combines two analytical techniques to a single method of analysing mixtures of chemical compounds (Gomathi *et al.*, 2015). Gas chromatography separates the components of the mixture and mass spectrometry analyses of each of the individual components. In the continuation of our study of the Nigerian medicinal plants as a source of antimicrobial and anti-infective agents, we decided to conduct preliminary phytochemical GCMS analysis as a prelude to further investigation on the search for active constituents of the plant. The preliminary findings are reported in this study.

**Materials and Methods****Plant material**

The leaf of *Senna singueana* (Rumfu) was collected from the forest of Kashere, Akko LGA of Gombe State – Nigeria in August 2017, by Dr Kolawole O. Saheed.

**Corresponding Author:****Kolawole OS**

Department of Biological Sciences, Federal University of Kashere, Gombe State, Nigeria

It was authenticated at the Federal University of Kashere (FUKH), and a voucher specimen (No: FUKH 0202) was deposited at the University herbarium. The collected leaf was air-dried and powdered using a mechanical grinder.

### Extraction

The air-dried and powdered leaf of *Senna singueana* (1kg) were macerated 2X using ethanol for 48 hours and 24 hours, respectively. It was then evaporated to afford the crude extract (50.60g).

### Phytochemical analysis

The crude extract was screened for phytochemicals according to the standard methods Trease and Evans (2000) and Kolawole *et al.* (2017) <sup>[11, 13]</sup> to determine the classes of phytochemicals present in the crude extract.

### GC-MS Analysis

The GCMS spectra were recorded on a GC-MS equipment (Shimadzu, Japan) GCMS QP 2010 PLUS fused with a GC Column (AOC 2i) coated with polymethyl silicon with a dimension of 0.25 mm X 30 mm. The instrument was set to an initial temperature of 110°C, and maintained at this temperature for 2 min. At the end of this period the oven temperature was rose up to 280°C, at the rate of an increase of 5°C/min, and maintained for 9 min. Injection port temperature was ensured as 250°C and Helium flow rate as one ml/min. The ionization voltage was 70eV.

### Identification of phytochemicals

Interpretation on Mass-Spectrum GC-MS was conducted using the database of National institute Standard and Technology (NIST) having more 62,000 patterns. The spectrum of the unknown components was compared with the spectrum of known components stored in the NIST library. The name, molecular weight and structure of the components of the test materials were ascertained and presented in Table 2.

### Results and Discussion

The results of the phytochemical investigations of the crude ethanol extract of the leaf of *S. singueana* indicated the presence of a wide range of classes of natural products which includes, steroids, alkaloids, saponins, phenols and reducing sugar (Table 1), but no tannins, glycosides, resins and flavonoids. GC-MS is the best technique used to identify the constituents of volatile matter, long chain, branched chain hydrocarbon, alcoholic acids and others. Peak area, retention times and molecular formula are used for the confirmation of phytochemical constituents. The active principles with their Retention time (RT), Molecular formula, Molecular weight (MW) and peak area in percentage are presented in Table 2. GC-MS analysis of ethanolic extract of *Senna singueana* leaves revealed the existence of (*Z*)-13-docosenoic acid (20.195%); *Z*-7-tetradecanal (25.733%); 1,5-cyclododecadiene, (*Z,Z*)- (23.567%); squalene (26.582%); 3-*O*-methyl-D-glucose (15.713%); hexadecanoic acid, 2,3-

dihydroxypropyl ester (24.104%) (Table 2).

It is of very importance to identify the possible roles of these constituents compound in the curative claims attributed to leaves of *Senna singueana* by Traditional Medical Practitioners. Our study on active constituents of ethanolic extract of *Senna singueana* revealed that the plants contained a wide range of GCMS chemical phytochemicals which may have contributed to its therapeutical value.

Tridecane is a flammable colourless liquid. In industry, they have no specific value aside from being components of various fuels and solvents. 1-Butanol-3-methyl acetate, isoamyl acetate or isopentyl acetate, belongs to the class of organic compounds known as carboxylic acid esters. Isoamyl acetate is the ester formed from isoamyl alcohol and acetic acid. It is a colourless liquid that is only slightly soluble in water, but very soluble in most organic solvents. Isoamyl acetate has a strong odour (just like Juicy Fruit or a pear drop) which is also described as similar to both banana and pear. In addition to its role as a flavouring or aroma agent in foods and perfumes, isoamyl acetate is released by a honey bee's sting where it serves as a pheromone to attract other bees and provoke them to sting.

Also reported in the ethanolic extract of leaves of *Senna singueana* is the triterpene, squalene (Figure 2r). It serves as a precursor for the production of secondary metabolites like vitamins, hormones and sterols (Lozano-Grande *et al.*, 2018) <sup>[15]</sup>. It is a source of carbon for microorganisms in aerobic and anaerobic fermentation (Ghimire *et al.*, 2016) <sup>[5]</sup>. It had been reported in previous studies to be present in several plant parts such as seed oil of *Carica papaya*, leaf of *Bidens pilosa*, seed oil of *Glycine max*, seed oil of *Cocos nucifera*, olive oil, rice, grape seed oil, peanut, corn and amaranth (Duke, 1992; Lozano-Grande *et al.*, 2018) <sup>[15, 1]</sup>. It has therapeutic potentials such as antibacterial, antifungal, antitumor, immunostimulant, cardioprotector, antioxidant, chemopreventive and lipoxygenase, anticancer as well as detoxifying (Smith, 2000; Liu *et al.*, 2009; Farvin *et al.* 2006; Lozano-Grande *et al.*, 2018) <sup>[19, 14, 3, 15]</sup>. It also has relevance in the cosmetic industries for the production of emollients and moisturizers (Kelly, 1999; Lozano-Grande *et al.*, 2018) <sup>[10, 15]</sup>.

Medicinal plants are used in traditional treatment to cure diseases of humans (Hariprasad and Ramakrishnan, 2011) <sup>[6]</sup>. Various scientific studies reported the analgesic, antiviral; antimalarial, antibacterial and antifertility activity (Vishnukanta, 2008; Sen and Batra, 2011; Gani *et al.*, 2019) <sup>[22, 18, 4]</sup>. Plants based phytochemicals have enormous therapeutic potential as they can serve the purpose with lesser side effects.

### Conclusion

GC-MS analysis of the ethanolic extract of leaves of *Senna singueana* reveals the presence of medicinally highly complex profile containing approximately 18 components. From this study it can be concluded that the *Senna singueana* may serve as a new potential source of medicines due to the presence of these phytochemicals and bioactive compounds.

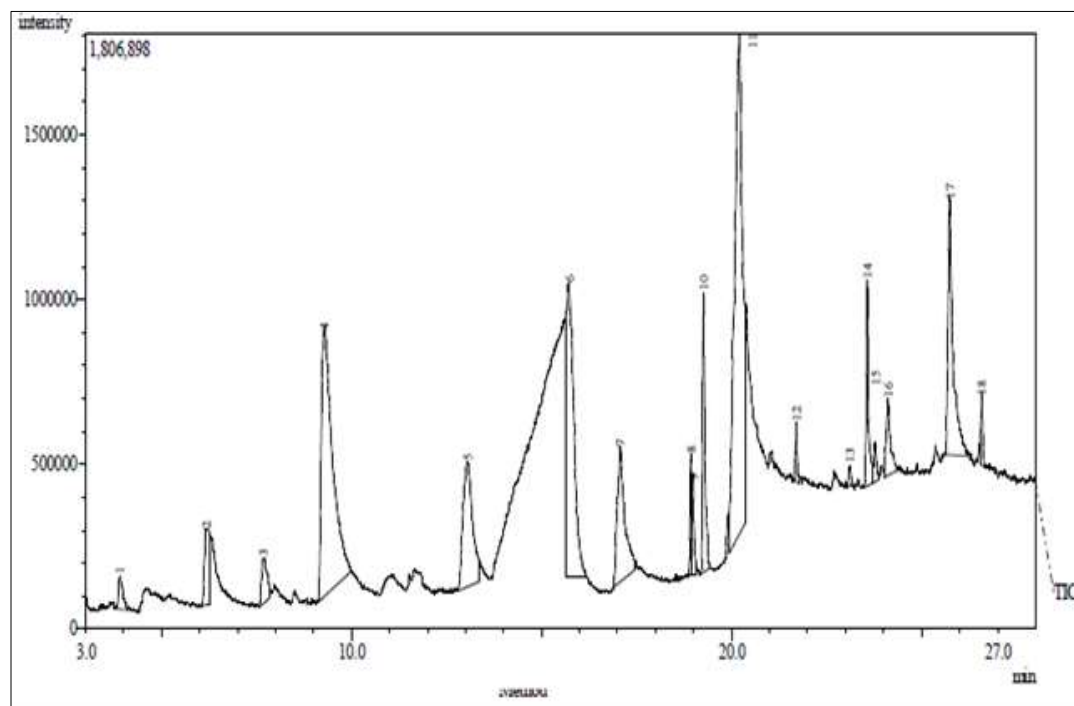


Fig 1: GC-MS Chromatogram of ethanolic leaf extract of *Senna singueana*

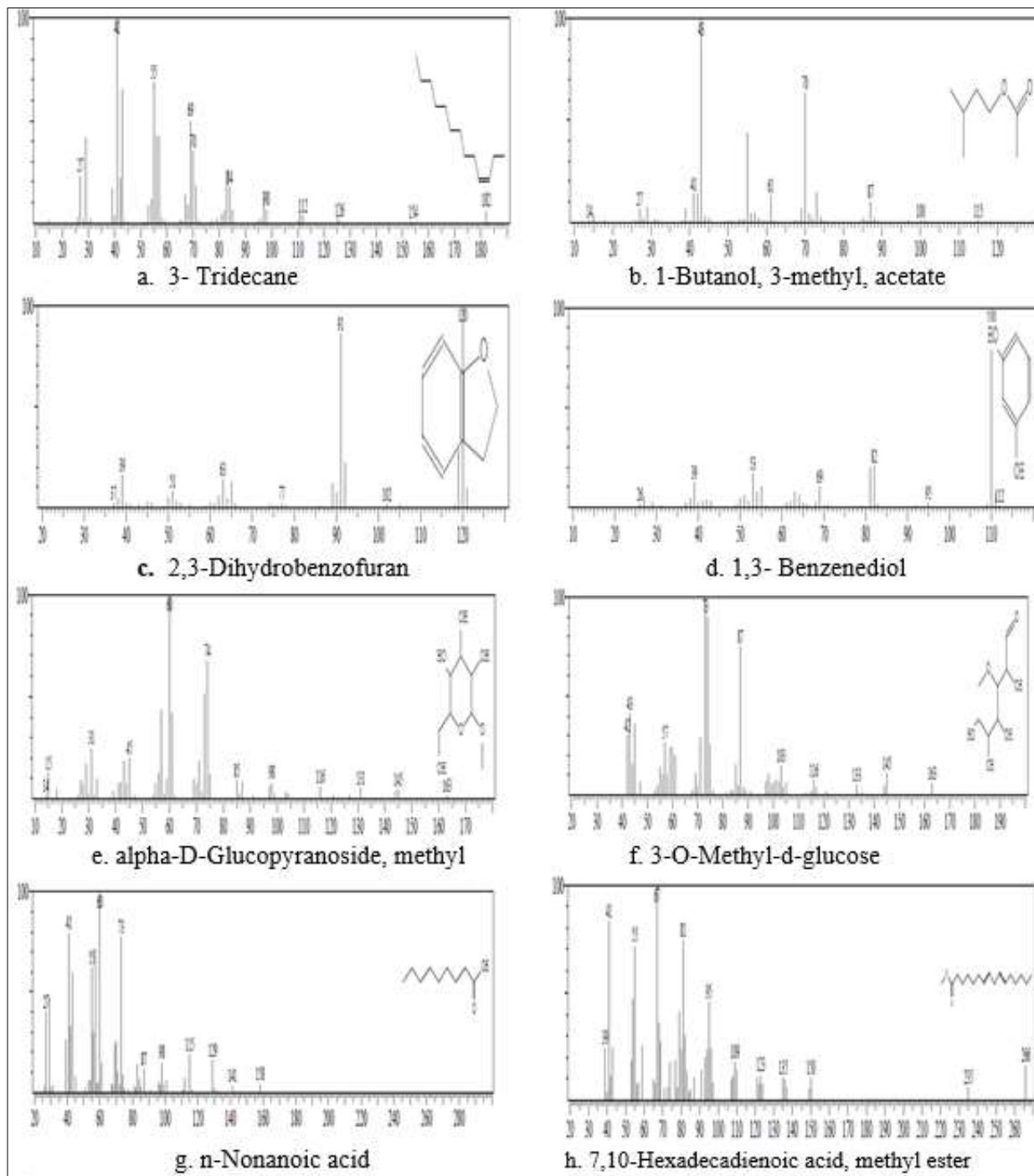
Table 1: Phytochemical analysis of leaves of *Senna singueana*

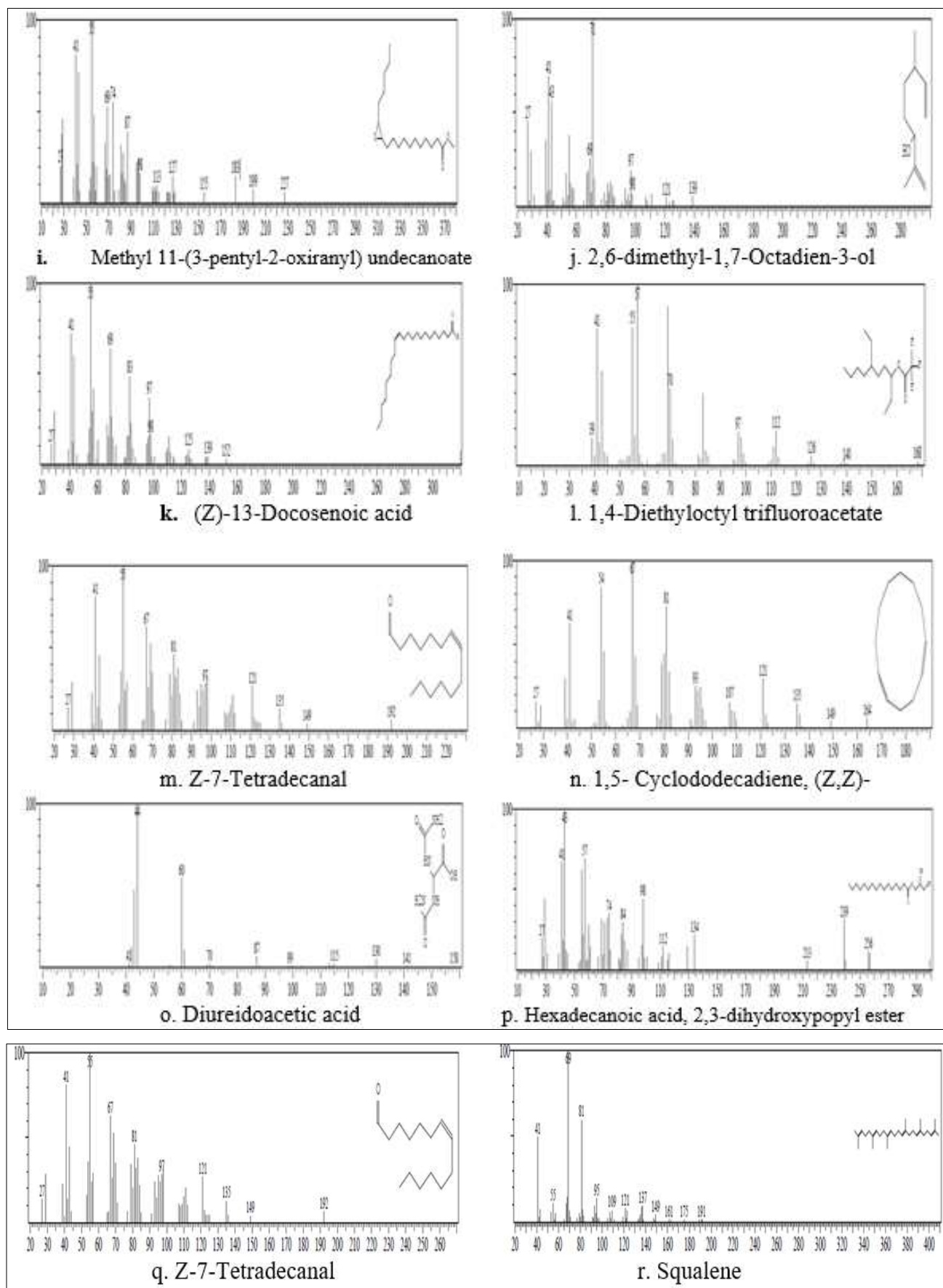
Phytochemical	Inferences
Tannins	-
Steroids	+
Alkaloids	+
Saponins	+
Glycosides	-
Resins	-
Phenols	+
Reducing sugars	+
Flavonoids	-

Key: present= +; Absent= -

Table 2: Some phytocomponents identified from ethanolic extracts of *Senna singueana* leaves

No	RT (Min)	Name of Compound	Molecular formula	Molecular Weight	Peak Area %
1	3.894	3-Tridecene	C <sub>13</sub> H <sub>26</sub>	182	0.91
2	6.184	1-Butanol, 3-methyl, acetate	C <sub>7</sub> H <sub>14</sub> O <sub>2</sub>	130	2.61
3	7.700	2,3-Dihydrobenzofuran	C <sub>8</sub> H <sub>8</sub> O	120	1.61
4	9.287	1,3-Benzenediol	C <sub>6</sub> H <sub>6</sub> O <sub>2</sub>	110	19.02
5	13.051	alpha-D-Glucopyranoside, methyl	C <sub>7</sub> H <sub>14</sub> O <sub>6</sub>	194	7.55
6	15.713	3-O-Methyl-d-glucose	C <sub>7</sub> H <sub>14</sub> O <sub>6</sub>	194	14.50
7	17.069	n-Nonanoic acid	C <sub>9</sub> H <sub>18</sub> O <sub>2</sub>	158	6.44
8	18.925	7,10-Hexadecadienoic acid, methyl ester	C <sub>17</sub> H <sub>30</sub> O <sub>2</sub>	266	1.41
9	18.982	Methyl 11-(3-Pentyl-2-oxiranyl) undecanoate	C <sub>19</sub> H <sub>36</sub> O <sub>3</sub>	312	1.09
10	19.624	2,6-Dimethyl-1,7-octadien-3-ol	C <sub>10</sub> H <sub>18</sub> O	154	4.28
11	20.195	(Z)-13-Docosenoic acid	C <sub>22</sub> H <sub>42</sub> O <sub>2</sub>	338	24.85
12	21.699	1,4-Diethyloctyl trifluoroacetate	C <sub>14</sub> H <sub>25</sub> F <sub>3</sub> O <sub>2</sub>	282	0.72
13	23.111	Z-7-Tetradecanal	C <sub>14</sub> H <sub>26</sub> O	210	0.29
14	23.567	1,5-Cyclododecadiene, (Z,Z)-	C <sub>12</sub> H <sub>20</sub>	164	3.12
15	23.782	Diureidoacetic acid	C <sub>4</sub> H <sub>8</sub> N <sub>4</sub> O <sub>4</sub>	176	0.61
16	24.104	Hexadecanoic acid, 2,3-dihydroxypropyl ester	C <sub>19</sub> H <sub>38</sub> O <sub>4</sub>	330	2.10
17	25.733	Z-7-Tetradecanal	C <sub>14</sub> H <sub>26</sub> O	210	8.12
18	26.582	Squalene	C <sub>30</sub> H <sub>50</sub>	410	0.78





**Fig 2:** Mass spectra of identified compound from leaf ethanolic extract of *Senna singuana*

#### Acknowledgements

Special thanks to TETFund for funding this research through the Institutional Based Research and the Director, Research and Development, Federal University of Kashere.

#### References

1. Duke JA. Handbook of Phytochemical Constituents of GRAS of Herbs and other Economic Plants. CRC Press, Boca Raton 1992, 356.

2. Ezuruike UF, Prieto JM. The use of plants in the traditional management of diabetes in Nigeria: pharmacological and toxicological considerations. *J Ethnopharmacol* 2014;155:857-924.
3. Farvin KHS, Ananda R, Hari S. Cardioprotective Effect of Squalene on Lipid Profile in Isoprenaline induced Myocardial Infarction in Rats. *Journal of Medicinal Food* 2006;9(4):531-536.
4. Gani AM, Kolawole OS, Dahiru M, Isyaka MS. Management of Malaria: An Account by the Indigenous People of Kashere and Its Environs, Gombe State, Nigeria. *Egypt. Acad. J Biolog. Sci* 2019;10(2):27-40.
5. Ghimire GP, Nguyen HT, Koirala N, Sohng IK. Advances in Biochemistry and Microbial Production of Squalene and its Derivatives. *Journal of Microbiology and Biotechnology* 2016;26(3):441-451.
6. Hariprasad PS, Ramakrishnan N. GC-MS analysis of *Rumex vesicarius* L. *Int. J Drug Dev. Res* 2011;3(2):272-279.
7. Hiben MG. *In vitro* erythrocyte hemolysis inhibition properties of *Senna singueana* extracts. *Mamona Ethiopian Journal of Science* 2012;4:16-8.
8. Hiben MG, Sibhat GG, Fanta BS, Gebrezgi HD, Tesema SB. Evaluation of *Senna singueana* leaf extract as an alternative or adjuvant therapy for malaria. *J Tradit Complement Med* 2016;6:112-17.
9. Kariuki HN, Kanui TI, Yenesew A, Mbugua PM, Patel NB. Antinociceptive activity of the root extracts of *Rhus natalensis* Kraus and *Senna singueana*. *Phytopharmacol* 2012;2:312-317.
10. Kelly GS. Squalene and its Potential Clinical Uses. *Alternative Medicine Review* 1999;44(11):29-36.
11. Kolawole OS. Taximetric study of species of subtribe Cassiinae in selected states of Nigeria. PhD Thesis (*Unpublished*). University of Ilorin, Ilorin 2017, 233.
12. Kolawole OS, Abdulrahman AA. Inter-Specific Variation in SDS-PAGE Electrophograms of Total Leaf Proteins in Some Species of Subtribe Cassiinae. *Egypt. Acad. J Biolog. Sci* 2019;10(1):1-11.
13. Kolawole OS, Jimoh MA, Yakubu F, Chukwuma EC. Taxonomic value of leaf micro-morphology and quantitative phytochemistry of *Jatropha integerrima* Jacq and *Jatropha podagrica* Hook. (Euphorbiaceae) - known horticultural plants in Nigeria. *Anales de Biologia* 2017;39:55-62.
14. Liu Y, Xu X, Bi D. Influence of Squalene Feeding on Plasma Leptin, Tetosterone and Blood Pressure in Rats. *India Journal of Medical Research* 2009;129(2):150-153.
15. Lozano-Grande MA, Gorinstein S, Espitia-Rangel E, Davila-Ortiz G, Martinez-Ayala AL. Plant Sources, Extraction Methods and Uses of Squalene. *International Journal of Agronomy* 2018. <http://www.hindawi.com/journals/ija/2018/1829160/>
16. Mabberley DJ. *Mabberley's Plant-Book: A Portable Dictionary of Plants, Their Classifications and Uses*, 3rd ed.; Cambridge University Press: Cambridge, UK 2008.
17. Saradha M, Paulsamy S. GC-MS analysis for bioactive compounds from methanolic leaf and stem bark extracts of *Hildegardia populifolia* (Roxb.) Schott & Endl. *Int. J Pharm. Sci. Rev. Res* 2013;23(2):328-332.
18. Sen A, Batra A. *Melia azedarach* L. A paradise tree. *J Funct. Environ. Bot* 2011;1(1):59-69.
19. Smith TJ. Squalene: Potential Chemoprotective Agent. *Expert Opinion on Investigative Drugs* 2000;9(8):1841-1848.
20. Sobeh M, Mahmoud MF, Hasan RA, Cheng H, El-Shazly AM, Wink M. *Senna singueana*: antioxidant, hepatoprotective, antiapoptotic properties and phytochemical profile of a methanol bark extract. *Molecules* 2017;22:1502-1514.
21. Tomoko N, Takashi A, Hiromu T, Yuka I, Hiroko M, Munekazu I *et al.* Antibacterial activity of extracts prepared from tropical and sub-tropical plants on methicillin resistant *Staphylococcus aureus*, *J Health. Sci* 2002;48:273-289.
22. Vishnukanta AC. *Melia azedarach*: A phytopharmacological review. *Pharmacogn. Rev: Plant Rev* 2008;2(3):173-179.