



E-ISSN: 2278-4136

P-ISSN: 2349-8234

[www.phytojournal.com](http://www.phytojournal.com)

JPP 2022; 11(4): 319-325

Received: 07-06-2022

Accepted: 11-07-2022

**Dr. Firdos Katiar**Associate Professor, Department  
of Botany, Christ Church  
College, Kanpur, Uttar Pradesh,  
India

## *Trichoderma* species as biocontrol agent against soil borne fungal pathogens

**Dr. Firdos Katiar****Abstract**

Soil borne pathogenic fungi are of major concern in agriculture which significantly decreases the plant yield. Chemically controlled plant imposes environmental threats potentially dangerous to humans as well as other animals. Thus, application of biological methods in plant disease control is more effective alternative technique. This study was carried out to isolate *Trichoderma* species from soil sample and to assess its *in vitro* biocontrol efficacy against fungal pathogens viz. *Sclerotium rolfsii*, *Sclerotinia sclerotiorum*, *Fusarium solani* and *Rhizoctonia solani*. Biocontrol efficacy testing of isolates against different fungal pathogens was performed by dual culture technique.

In this study, five different *Trichoderma* species were isolated from 26 various soil samples and were tested against four fungal soil-borne pathogens. Inhibition percentage of radial growth of *Sclerotium rolfsii* by three of the *Trichoderma* isolates was found to be 100%; about 62% and 68% of maximum inhibition was observed against *Rhizoctonia solani* and *Fusarium solani* respectively whereas *Sclerotinia sclerotiorum* was inhibited maximum up to 23%. This *in vitro* study revealed that although *Trichoderma* species plays an important role in controlling all type of soil borne fungal plant pathogens, however, isolates as biocontrol agent against *Sclerotium rolfsii* was found to be more efficient in comparison to other pathogens.

**Keywords:** Biocontrol, trichoderma species, inhibition percentage, soil borne pathogens and dual culture technique

**Introduction**

Soil borne plant pathogenic fungi cause heavy crop losses all over the world. Agriculture has been facing the destructive activities of numerous pests and pathogens from an early time, which leads not only to the reduction of yield of the crops but also the aesthetic value. Chemical control of such plant pathogens disturbs the environment, subverts ecology, degrades soil productivity, and mismanages water resources [1, 2]. In addition to this, due to the growing cost of pesticides, particularly in the less affluent region of the world and consumer demands for pesticide-free food has led to the search for the substitutes for these products. Biological control of plant diseases, especially those caused by soil borne plant pathogens and nematodes, by microorganisms has been considered a more natural and environmentally acceptable alternative to the existing chemical treatment methods [3]. The renewed interest in biocontrol among agriculture biologists is due to its eco-friendly protection against weeds, insects, and plant diseases, a long lasting effect, and safety features. Some of the bacterial antagonists, however, also have been found to show direct growth promoting effects on crop plant inoculants [4, 5].

Biocontrol agent (BCAs) can inhibit the growth of soil borne pathogens through various biocontrol mechanisms such as ability to grow much faster than them for space and nutrients, producing many powerful plant degrading enzymes such as lytic enzymes, proteolytic enzymes and more than 200 types of antibiotics which are highly toxic to any macro- and microorganism [6]. The ability to produce multiple antibiotics probably helps to suppress diverse microbial competitors, some of which are likely to be plant pathogens and thus enhance biological control. The antibiotics have been shown to be particularly effective at suppressing growth of the target pathogen *in vitro* and/or *in situ*. Some examples of antibiotics reported to be involved in plant pathogen suppression are 2, 4-diacetylphloroglucinol produced by *Pseudomonas fluorescens* F113 against *Pythium* species which causes the damping off disease, gliotoxin produced by *Trichoderma virens* against *Rhizoctonia solani* which causes root rot in plants [7]. Moreover, enzymes produced by BCAs are able to hydrolyze chitin, proteins, cellulose, and hemicellulose.

Thus contributing to direct suppression of plant pathogens. There are selective examples of BCAs able to produce enzymes effective against certain plant pathogens [8].

**Corresponding Author:****Dr. Firdos Katiar**Associate Professor, Department  
of Botany, Christ Church  
College, Kanpur, Uttar Pradesh,  
India

Plant disease is a complex phenomenon and, is an interaction among the host, the parasite and the environment. It can be defined as the disturbance in the rhythmical equilibrium of a host in respect of structure or physiology or both, and which may lead to the death of a part or entire host or reduce value of its products. The mycelium of *Sclerotium rolfsii* survives best in sandy soils, whereas, the sclerotia survive best in moist, aerobic conditions found at the soil surface [9]. Similarly, *Fusarium solani* and *Rhizoctonia solani* are the most important fungal pathogens, which develop in both cultured and non-cultured soils, causing the symptoms of damping off and root rot diseases to the wide range of vegetable and crop plants including tomato [10]. For the effective biocontrol of soil borne pathogens a major consideration is the antagonist's proliferation after introduction into the soil.

*Trichoderma* species is considered as promising biological control agents against numerous phytopathogenic fungi since it is able to inhibit the phytopathogenic fungi either by including resistance and plant defense reaction or by direct confrontation through mycoparasitism and competition or by producing antibiotics [11]. *Trichoderma* species not only produce potential antibiotics, for example the peptaibols, but also mycotoxins and more than 100 metabolites with antibiotic activities including polyketides, pyrones, terpenes, metabolites derived from amino acids and polypeptides [12]. *Trichoderma* species being a biocontrol agent have shown efficacy against diseases caused by pathogens such as *Fusarium oxysporum*, *Rhizoctonia solani*, *Pythium aphanidermatum*, *Fusarium culmorum*, *Gaeumannomyces graminis* var. *tritici*, *Sclerotium rolfsii*, *Phytophthora cactorum*, *Botrytis cinerea* and *Alternaria* species [13]. Thus, *Trichoderma* species has been considered a viable alternative method to manage plant diseases [14]. The role of *Trichoderma* species is not only to control the growth of pathogenic microbes, but there are various other uses for *Trichoderma* species such as, enhance plant defense responses, stimulate colonization of rhizosphere and stimulates plant growth, root growth [15, 16].

## Materials and Methodology

### Collection of soil sample

Twenty-six soil samples were collected from different the soft ripe and unripe fruits in contact with the soil is very common in tomato growing areas and fresh and decaying soil samples from old and new heaps were collected into clean polythene bags cultivated with crops like cauliflower, potato, orange, wheat, pea, mustard, coffee, carrot, garlic, banana and tomato. Some of the *Trichoderma* isolate were obtained from the cultivated with oranges, pea wheat, cauliflower, potato. Similarly, soil sample collected from terai region (Sarlahi, Siraha, Bardiya) having warm and humid climate was cultivated with mustard, broad bean, eggplant representing growth of some *Trichoderma* isolates.

Primarily, soil samples were collected from the zone which has used only organic fertilizer and has not used any pesticides, fungicides or any other chemical agent, to know natural availability of biocontrol agent. It is because, biocontrol agents are not much available in such agricultural land with excessive use of chemical fertilizers since it leads to the inhibition of biocontrol agents present in that soil.

### Isolation of biocontrol agent, *Trichoderma* species

The collected soil sample from different geographical reason was used for isolation of *Trichoderma* species. From the serial

dilution, soil samples of 0.5 ml each was poured in selective media Potato Dextrose Agar (PDA) for isolation of *Trichoderma* species and soil plating were performed. The plate was then allowed to incubate for 3-4 days at 25-26°C. Incubation results the fuzzy growth of fungus on the PDA plate was observed which was also seen after seven days of cultivation.

### Identification of *Trichoderma* isolates

After the isolation of all isolates, it was examined under a microscope (Olympus CH20, at Plant Pathology Laboratory, for the identification and confirmatory of *Trichoderma* species. Macroscopic visualization showed rapid growth rate and colonies are wooly becoming compact in time; and the surface colony color was white and scattered greenish patches become visible as the conidia are formed and may form concentric rings at times while on the reverse, the color is pale, tan, or yellowish. After then, growth observed in those plates was taken for microscopic study, colony characteristics and morphology of each *Trichoderma* isolate was observed. Microscopic observation of specimens was done by the sticky tape method [17]. Examination of the shape, size, arrangement and development of conidiophores (repeatedly branched conidiophores) or phialides (irregularly verticillate, bearing clusters of divergent, often irregularly bent, flask - shaped phialides) or conidia (unicellular, round or ellipsoidal, green in color, smooth walled or rough conidia) provided a tentative identification of *Trichoderma* species.

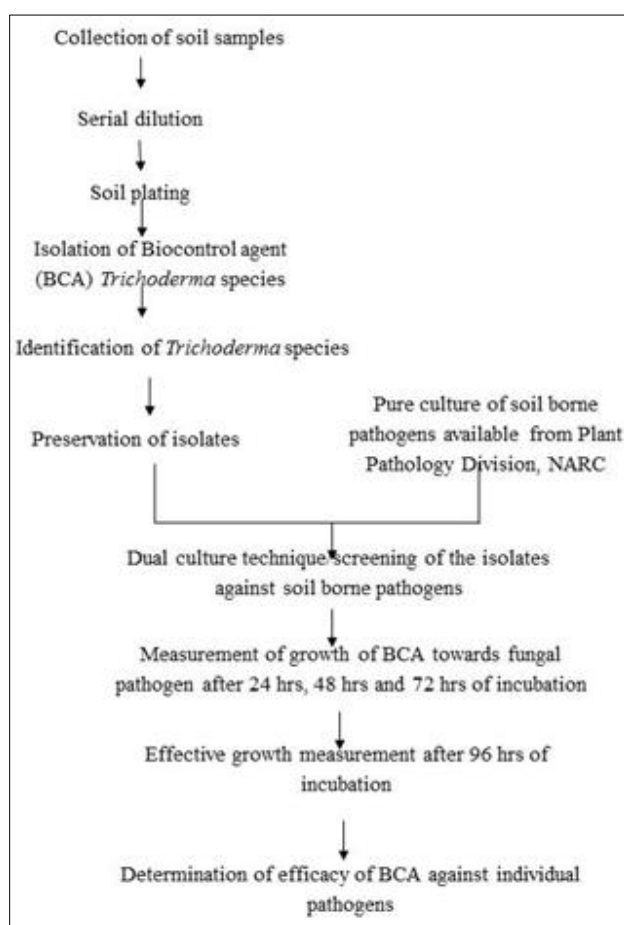


Fig 1: An overview of overall methodology

### Dual culture of isolates with fungal pathogens

All the isolates obtained from the soil sample were evaluated *in vitro* for their biocontrol efficacy against fungal pathogens by dual culture methods. The soil borne fungal pathogens

*Sclerotium rolfsii*, *Rhizoctonia solani*, *Fusarium solani* and *Sclerotinia sclerotiorum* were provided from the Plant Pathology lab. These fungal pathogens were isolated from naturally infected tomato, egg-plant, mustard plant and brassicas respectively causing wilt and rot disease and obtained in pure culture form.

First of all, 20 ml of prepared PDA was poured in petri plates and allowed to solidify. After solidification of PDA media, 5 mm diameter mycelia disc from the margin of 7 day-old culture of *Trichoderma* species and the soil-borne pathogens were placed on the opposite ends of the plate at equal distance from the periphery on the same day. There were 3 replications for each treatment. The experimental design used was set up with eight Petri dishes for each isolate. In control plates, a sterile disc, Whatman No.1 filter paper of 5 mm diameter, was placed at opposite side of targeted fungal pathogens. The experiment was performed in complete aseptic condition and both the control plates and test plates were incubated at  $25 \pm 1^\circ\text{C}$  for 7 days. The colony diameter of radial growth of targeted fungal pathogens was measured after each 1st, 2nd, 3rd and 4th days of incubation period at two locations from

center of the test placed and average diameter were calculated. Finally, percent inhibition of average radial growth was also calculated in relation to the growth of the controls <sup>[18]</sup> and the flowchart for methodology for this experiment is shown in Figure 1.

$$L = [(C - T)/C] \times 100$$

Where

L = inhibition percentage;

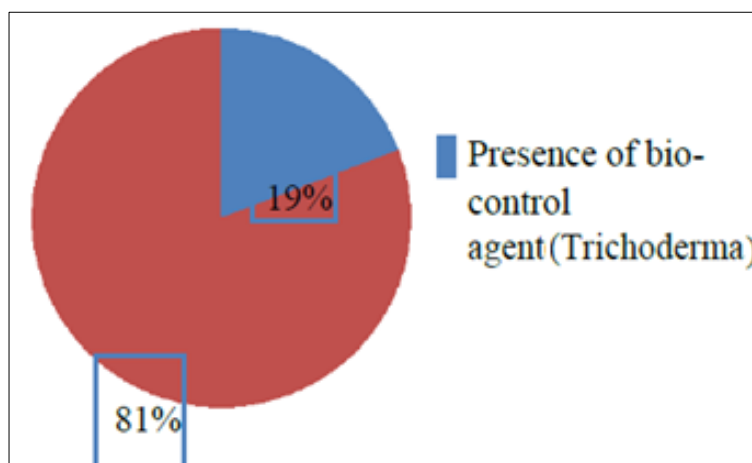
C = radial growth measurement of the pathogen in control

T = radial growth of pathogen in the presence of *Trichoderma* isolates.

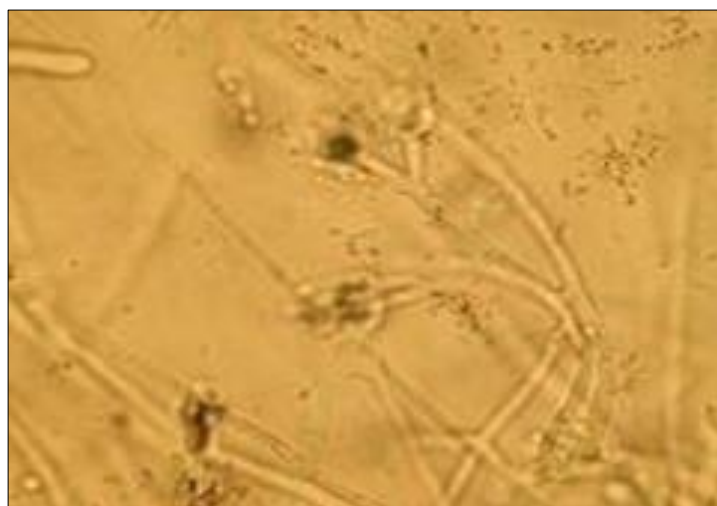
## Results

### Isolation of biocontrol agent and microscopic view

The growth of *Trichoderma* species in PDA plates were observed after 7 days of inoculation and incubation of soil samples. Isolated *Trichoderma* species from soil samples used as biocontrol agents is represented in Figure 2.



**Fig 2:** Isolation of *Trichoderma* species from collected soil samples



**Fig 3:** Microscopic view of *Trichoderma* isolate TS 206 with repeatedly branched Conidiophore, flask - shaped phialides and rough conidia

Out of 26 soil samples tested, the *Trichoderma* species were isolated in 5 soil samples. The green or white colored fuzzy form growth indicated the *Trichoderma* species and was confirmed by the microscopic examination as shown in Figure 3.

### Inhibition percentage shown by *Trichoderma* isolates against soil borne pathogens

Inhibition percentage of the test soil-borne pathogens in the presence of *Trichoderma* species was performed by dual culture technique which requires both the control plates and test plates. One of the control plates of *Sclerotium rolfsii* is shown in Figure 4 indicating three replications.



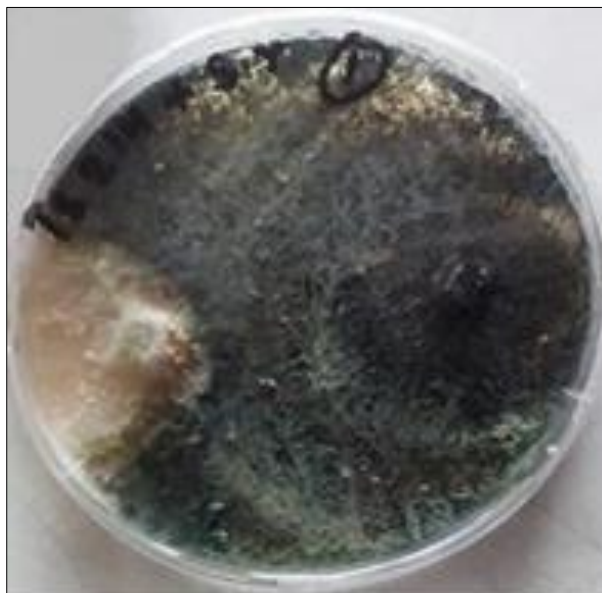
**Fig 4:** Indicating three replications

But the *Sclerotium sclerotiorum* was not much controlled by *Trichoderma* isolate TS 215 indicating inhibition percentage of 22.01%. Dual culture plate of *Trichoderma* isolates against *Sclerotium sclerotiorum* is as shown in Figure 6. In the case of dual culture with *Fusarium solani*, one of the isolates of *Trichoderma* species showed the maximum inhibition percentage of 63.3% whereas, rest of the four isolates showed inhibition below 45%. Similarly, isolates against *Rhizoctonia solani* also revealed growth inhibition of pathogens.

Figure 4: Colony growth in control plates of *Sclerotium rolfsii* after 96 hrs of incubation shows the whole area of a petri plate is rapidly covered with mycelium, including aerial hyphae which may cover the lid of the plate. Among the test pathogens, *Trichoderma* isolates named as TS 209, TS 206 and TS 181 showed almost 100% inhibitions against *Sclerotium rolfsii* by covering the growth of whole pathogen in the plate. Also, the isolates TS 214 after five day of incubation was found to work more actively against *Sclerotium rolfsii* as shown in Figure 5.



**Fig 5:** Dual culture plate of *Sclerotium rolfsii* with *Trichoderma* species after 5th day of incubation shows a very well inhibition of white spores like mycelium of *S. rolfsii* by TS 214 isolates representing effective biological action over pathogens.

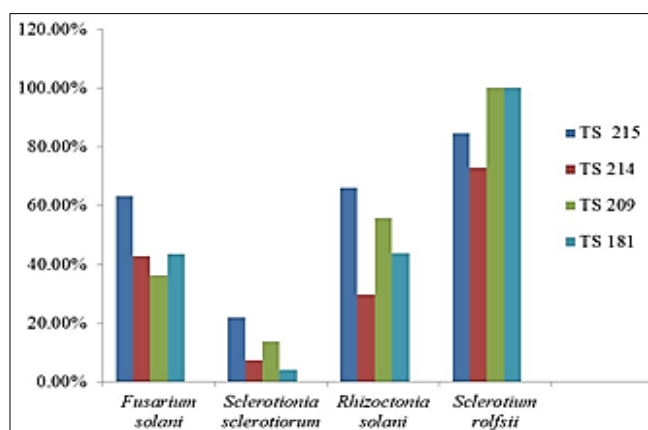


**Fig 6:** Dual culture plate of 5 different Trichoderma isolates against *Sclerotinia sclerotiorum* (S.S. 1 indicating first replication) after 96 hours of incubation shows competitive effect with almost equal mode of action over each other.

The maximum inhibition percentage observed was 66.08% which indicated effective reduction of the colony growth of *Rhizoctonia solani* after 96 hours cultivation. Other three isolates were also able to inhibit growth of *Rhizoctonia solani* pathogen up to 55.7%, 47.2%, 43.77% and lowest inhibition percentage of 29.7% was shown by one of Trichoderma species. Therefore, among these test pathogens, Trichoderma species showed strong and effective biocontrol activity against *Sclerotium rolfsii*. The *in vitro* study also showed that Trichoderma species effectively reduced the growth of both *Fusarium solani* and *Rhizoctonia solani* with almost equal inhibition percentage. Inhibition percentage of the test soil-borne pathogens in the presence of Trichoderma species by dual culture technique is shown in Figure 7.

## Discussion

In this study, the results of dual culture revealed the rapid and effective growth of Trichoderma isolates used against *Sclerotium rolfsii* in comparison to other pathogens



**Fig 7:** Inhibition percentage of all four soil borne fungal pathogens by five Trichoderma isolates shows individual biocontrol action of isolates over placed pathogens.

Whereas, in this study, *Sclerotium rolfsii* isolated from infected tomato was found to be inhibited nearly up to 100% by three isolates of the Trichoderma species and two isolates showed inhibition of 84.5% and 72.8% respectively.

(*Sclerotinia sclerotiorum*, *Fusarium solani* and *Rhizoctonia solani*). *In vitro* efficacy testing of biocontrol agent against soil borne pathogen was studied by dual culture technique. Three replication of Trichoderma species were used during this technique for the calculation of average diameter growth of respective pathogens for a reliable result. The colony growth of *Sclerotium rolfsii* on the 4th day incubation was found to be covered by the growth of Trichoderma species. Due to overgrowth of Trichoderma species in the plate, the growth of test fungal pathogen was found to be highly inhibited. Antagonistic interactions of Trichoderma species isolate TS 215 showed excellent activity against *Sclerotium rolfsii*, which is known to cause wilt and rot diseases in plants. The damping off disease caused by *Sclerotium rolfsii* is an important disease of tomato (*Lycopersicon esculentum*) and other vegetable crops when treated with biocontrol agent *Trichoderma harzianum*, about 52-62% disease reduction was achieved in another study [19].

Similarly, this study showed the mycelium growth inhibition of the *Rhizoctonia solani* of 66.08-29.07% by isolates of Trichoderma whereas in another study, three different isolates of Trichoderma against soil borne pathogen *Rhizoctonia solani* was observed to be 74.4-67.8% [20].

However, some of the antagonists tested were not found to be very effective against test pathogens under the *in vitro* observations but they may show better result under their natural field condition as their activities depend on the physico- of the environment [21]. On the dual culture plate of Trichoderma species with *Sclerotinia sclerotiorum*, competitive effect was observed. Here pathogen continued its radial growth and Trichoderma species placed in the same plate also showed radial growth. When colony growth of pathogen and biocontrol agent came in contact with each other, both showed its action over each other, however, Trichoderma isolates was able to shown less efficacy over growth of pathogens.

In this study, biocontrol activity of Trichoderma isolate TS 215 also showed active action against soil borne pathogen *Fusarium solani* showing inhibition percentage more than 60%. Similarly, from other experiment, under *in vitro* conditions, the result revealed that *Trichoderma harzianum*,

isolates N-8, was found to inhibit the radial mycelial growth of the pathogen effectively by 68.22% [22]. The inhibition shown by the antagonists may be due to release of antibiotic or antibiotic like substances or hyphal parasitism which results in direct inhibition of growth of the pathogen by disintegrating the hyphal wall resulting in the penetration, absorption and lysis of the mycelium.

Biological control is a promising tool to maintain current level of agricultural production by reducing the release of polluting chemical pesticides to the environment as well as making the plants free from infecting soil borne pathogens, leading to high yield of crops. It is a complex process made up from several successive steps but primarily contact is made between fungal antagonist and host (pathogen) surface. Plant pathogenic fungi and nematodes is a widespread problem and the use of chemicals is hardly successful. According to this study, biological control is seen as a better alternative and may be helpful, especially against soil borne fungal pathogens *Sclerotium rolfsii*, *Fusarium solani*, *Rhizoctonia solani* and *Sclerotium sclerotiorum*. One of the main advantages of the biocontrol agents is that it is cost effective and leads no harm to the crop. Most frequently species of *Bacillus*, *Pseudomonas* and *Trichoderma* are used for biological control of fungal pathogens. Among them, one of the fungal biocontrol agents used in this study is *Trichoderma* species. They are common saprophytic fungi found in almost any soil and rhizospheric microflora. The reason for choosing *Trichoderma* species as potential biocontrol agents is because of their ability to reduce the incidence of disease caused by plant pathogenic fungi [23]. Possible mechanisms of antagonism employed by *Trichoderma* species includes nutrient and niche competitions, antibiosis by producing volatile components and non-volatile antibiotics that are inhibitory against a range of soil borne fungi, as well as parasitism. Antagonistic microorganisms like *Trichoderma* reduce growth, survival or infections caused by the pathogens by different mechanisms like competition, antibiosis, mycoparasitism, hyphal interactions, and enzyme secretion [24].

It is widely known that environmental parameters such as abiotic (soil type, soil temperature, soil pH and water potential) and biotic (plant species and variety, microbial activity of the soil) factors as well as other factors such as method and timing of applications may have influence on the biological control efficacy of *Trichoderma* isolates [25]. The soil samples were collected from different districts that include hot region as well as cold region. The soil samples of cold region comparatively showed slow growth rate than that of hot region. Initially, in the PDA plates *Trichoderma* species is found to grow slowly, it may be due to the presence of other pathogens which have capacity to dominate or slow down the growth of *Trichoderma* species. It may also be due to dispersal of spores in the environment. This can be the reason why some *Trichoderma* species took almost one month for isolation.

The *in vitro* screening of the antagonistic potential used in this work allowed a systematic investigation of several *Trichoderma* isolates. The applied *Trichoderma* species in this study revealed the most effective inhibition of growth of fungal pathogen *Sclerotium rolfsii* and biocontrol action over rest of the test pathogens was limited. However, positive results obtained from this *in vitro* studies are only indicative, as experimental conditions do not take all ecological and endemic factors into account. For this reason, much more work needs to be done to explore the possibility of the use of this biocontrol agent in field condition to control the diseases

caused by *Sclerotium rolfsii* and several other soil borne fungal pathogens by adopting appropriate techniques for field trial. Further actions need to be carried out to prepare cost-effective, easy-to-produce and easy-to-apply formulations of different species of *Trichoderma* isolates.

### Conclusion

It can be concluded that the isolated *Trichoderma* species reduced the growth of all the four soil borne pathogens: *Sclerotium rolfsii*, *Fusarium solani*, *Rhizoctonia solani* and *Sclerotium sclerotiorum* significantly in different level and, therefore, can be incorporated for integrated disease management of soil borne plant pathogens. Hence, *Trichoderma* species can be used as a potential biocontrol agent against these pathogens. However, its efficacy against *Sclerotium rolfsii* was found to be more in comparison to others. Therefore, this research can have promising potential in agricultural field to protect plants affected with various fungal pathogens, especially *Sclerotium rolfsii*.

### References

1. Dubey HC. Rhizobacteria in biological contribution and Plant growth promotion. *J.mycolpl.Pathol.* 2001;31:9.
2. Patibanda AK, Sen B. interaction of *aspergillus niger* AN 27 of potential bio control agent against soil borne plant pathogens. *Indian Phytoogy.* 2007;60(2):264-267.
3. Mukhopadhyay AN. Presidential Address Biological Control of Soil borne plant pathogens *Trichoderma* spp. *Indian J. Mycol. Pathol.* 1987;17:110
4. Singh US, Mishra DS, Prasad RD, Chaubay HS. Biological Control of Plant Pathogen Indian Historical Perspective, present status and prospects in : *Hundred Years of Biological;* c2001.
5. Sundram RM. Bio Control Characteristic of *Trichoderma Harzianum* isolate-1 Propplant fusion with *Trichoderma harzianum*, isolate-3 M.Sc. Thesis G.B. pant University of Agriculture and Technology, Pant Nagar; c1996.
6. Sinha TSP. studies on the fruit rot of Tomato field incited by *Sclerotium* Doctoral theiss, magadh University, Bodh Gaya, 1985, 824234.
7. Vyas RK, Madhur Kurum. Distribution of *Trichoderma* Spp in Cumin Rhizosphere potential in suppression of Wilt : *India Ph.* 2002;55(4):451:547
8. Khan Ashraf Ali, Siaha AP. Bio-control potential of *Trichoderma* spp against sheath blight of rice *Indian Phytopath (2008-2013);* c2007.
9. Baker KF, Cook R. *Biological Control of plant Pathogens* W.H. Freeman & Co.San Franscisco, California; c1974.
10. Barker R. In *Biological Control of Soil born plant Pathogens (D or ED)* Cab International Walling Ford United Kingdom; c1990.
11. Elady-Chet, Aland Ketand J. *Trichoderma Hamatum* a Biological Control Agent effective against *Sclerotium rolfsii* and *Rhizotonia sonani* : *Phyto Pathology. marcescens.* Msc. Thesis UAS Dharwad, 2006, 33-40.
12. Arunasri P, Chalam TV, Eswara Reddy NP, Tirumala Reddy S. Collar-rot disease of crossandra induced by *Sclerotium rolfsii* and its management. A critical review (*International Journal of Applied Biology and Pharmaceutical Technology*), 2011, 306-314.
13. Abu-Taleb Amira M, Kadriya El-Deeb, Fatimah OAl-Otibi. Assessment of antifungal activity of *Rumexvesicarius* L. and *Ziziphusspina-christi* (L.) wild extracts against two phytopathogenic fungi. *Afr J Microbiol Res.* 2011;5(9):1001-1011.

14. Odebode AC. Control of post harvest pathogens of fruits by culture filtrate from antagonistic fungi. In Journal of Plant Protec Res. 2006;46(1):1-6.
15. Sivasithamparam K, Ghisalberti EL. Secondary metabolism in *Trichoderma* and *Gliocladium*. 1, London. 1998, 139-192.
16. Kucuk C, Kivanc M. Isolation of *Trichoderma* species and determination of their antifungal, biochemical and physiological features. Turkish Journal of Biology. 2003;27:247-253.
17. Heydari A, Pessarakli M. A Review on Biological Control of Fungal Plant Pathogens Using Microbial Antagonists. Journal of Biological Sciences. 2010;10(4):273-290.
18. Vinale F, Sivasithamparam K, Ghisalberti LE, Marra R, Woo LS and Lorito M: *Trichoderma*-plant-pathogen interactions. Soil Biol Biochem. 2008;40(1):1-10.
19. Harman GE, Howell CR, Viterbo A, Chet I, and Lorito M: *Trichoderma* species-opportunistic, a virulent plant symbiont. Nature Rev Microbiol. 2004;2(1):43-56.
20. Flegel TW: Semi permanent microscope slides of micro fungi using sticky tape technique, Canadian Journal of Microbiology. 1980;26(4):551-553.
21. Hajiegharai B, Torabi-giglou M, Mohammadi MR, Davari M. Biological potential of some Iranian *Trichoderma* isolates in the control of soil born plant pathogenic fungi. African Journal of Biotechnology. 2008;7(8):967-972.
22. Okereke VC, Wokocho RC. Effects of Some Tropical Plant Extracts, *Trichoderma harzianum* and Captan on the Damping-off Disease of Tomato Induced by *Sclerotium rolfsii*. Agricultural Journal. 2006;1(2):52-54.
23. Asad SA, Ali N, Hameed A, Khan SA, Ahmad R, Bilal M, *et al.* Biocontrol Efficacy of Different isolates of *Trichoderma* against Soil Borne Pathogens *Rhizoctonia solani*. Polish Journal of Microbiology. 2014;63(1):95-103.
24. Burgess LW, Griffin DM. Competitive saprophytic colonization of wheat straw. Ann appl Biol. 1967;60(1):137-42.
25. Barari H, Foroutan A. Biocontrol of Soybean Charcoal Root Rot Disease by Using *Trichoderma* spp. Agronomic research in Moldavia, 2013, 45-55.
26. Dubey SC, Suresh M, Singh B. Evaluation of *Trichoderma* species against *Fusarium oxysporum* fsp. *Ciceris* for integrated management of chickpea wilt. Biol Contr. 2007;40(1):118-127.
27. Ponnusamykonar P, Venkatasamy K and Varatharajan P: *In vitro* study of antagonistic effect of *Trichoderma* sp., on tea plant pathogen, *Phomopsis theae*. Archives of Applied Science Research. 2011;3(4):352-358.
28. Behzad H, Mousa T, Mohammad RM, Mahdi D. Biological potential of some Iranian *Trichoderma* isolates in the control of soil borne plant pathogenic fungi. Afr J Biotechnol. 2008;7:967-972.